

Foundations

ROBERT MORRIS UNIVERSITY MAGAZINE > FALL 2006



**Special Issue:
President's 2005-06 Annual Report**



DEAR ALUMNI AND FRIENDS,

We are fortunate at Robert Morris University to have a bright, energetic student body and a devoted and talented faculty and staff. With their assistance, and the support of our alumni and friends, RMU accomplished much this past year.

In addition to announcing several new academic programs and obtaining accreditation for others, we welcomed many new faculty members, including Rooney Visiting Scholars from the United Kingdom, South Africa and India. Among the new programs announced was the proposed School of Osteopathic Medicine, which, if approved, will allow us to build upon our previous success in the health care field that began with the School of Nursing and Allied Health. Together, these schools will comprise a new College of Health Sciences, to which we plan to add other programs over time.

In the past year, we were able to offer our students new or renovated facilities in which to live and learn, including classrooms, laboratories, residence halls and an athletic stadium complex. We celebrated the accomplishments of students and faculty in and out of our classrooms, as well as the success of our institution during last fall's Inauguration Week.

We did our part to assist those in need, both regionally and nationally, through programs and projects coordinated by America's Promise, the Office of Student Community Service and the University Honors Program, as well as various hurricane relief projects benefiting the Gulf Coast region.

Finally, we made great strides in preparing for RMU's future by undertaking the development of a 10-year strategic plan.

While we are immensely proud of these accomplishments, there are greater opportunities on the horizon for RMU. I look forward to working with you in the coming year to make the most of those opportunities. Thank you for your interest in and commitment to Robert Morris University.

GREGORY G. DELL'OMO, PH.D.
PRESIDENT

CREDITS

EDITOR

Jennifer J. Roupe

CONTRIBUTORS

James Duzyk M'00, Michael Rick,
Catherine Skena

DESIGN

Amy Joy, Susan Limoncelli

PHOTOGRAPHY

Terry Clark, Jason Cohn, Kevin Cooke,
David Kennedy, Ed Macko, Dave Miller

PRINTING

Herrmann Printing & Litho Inc.

Foundations is published three times a year by the Office of Public Relations and Marketing in conjunction with the Office of Institutional Advancement and mailed free of charge to alumni, donors, trustees, faculty, staff and friends of Robert Morris University. The opinions expressed in the magazine do not necessarily reflect the official policies of Robert Morris University.

Contributions to Class Notes and address changes may be sent to:

Office of Institutional Advancement
Robert Morris University
6001 University Boulevard
Moon Township, PA
15108-1189

Phone: 412-262-8481

Fax: 412-262-8642

E-mail: rmualum@rmu.edu

It is the policy of Robert Morris University to provide equal opportunity in all educational programs and activities, admission of students and conditions of employment for all qualified individuals regardless of race, color, sex, religion, age, disability, national origin and/or sexual preference.

Departments

2 CAMPUS REPORT

Check out the latest happenings on campus, including commencement, the Colonial Theatre and more!

4 FACULTY SPOTLIGHT

A roundup of the latest faculty news, including awards, papers published and appointments.

5 STUDENT SPOTLIGHT

Meet some of RMU's best and brightest, and learn about the new exchange program in Chile.

6 SCOREBOARD

Catch up with the Colonials with this review of 2006 spring sports – and check out RMU's new athletic logo.

35 ADVANCEMENT

See how the Class of 2006 is giving back to RMU and learn about two new endowed scholarships.

37 CLASS NOTES

Check in to see what your former classmates are up to!

40 UPCOMING EVENTS

Mark your calendar now for these upcoming alumni events.

ON THE COVER: Robert Morris University's Colonial Village includes the Melvin D. Teetz Alumni House, home to the Office of Institutional Advancement, and the Rooney House, home to a different Rooney Visiting Scholar each semester. Future houses are planned for the village in years to come.



President's 2005-06 Annual Report 8

A review of the top stories of Gregory G. Dell'Omo, Ph.D.'s first year as president of Robert Morris University.

Board of Trustees 16

Financials 17

Honor Roll of Donors 18



CAMPUS REPORT

COMMENCEMENT 2006

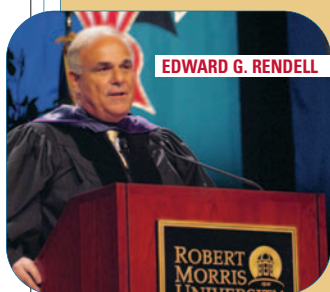
RMU celebrated its 81st – and President Gregory G. Dell’Omo’s first – commencement ceremony on Saturday, May 6, in Sewall

Center Arena. Approximately 1,130 students earned degrees from RMU during the 2005-06 year, many of whom were on hand to hear the commencement address of Pennsylvania Governor **EDWARD G. RENDELL**. Alumnus **MORGAN O’BRIEN ‘82 M’85**, president and chief executive

officer of Duquesne Light Holdings, was presented with an honorary doctoral degree.

Among this year’s graduates were the first 34 students to receive degrees through the School of Nursing and

Allied Health, 18 of whom earned the Bachelor of Science in Nursing (B.S.N.) and 16 of whom earned the Master of Science in Nursing (M.S.N.) degree. Other programs awarding degrees for the first time included the Master of Science in Organizational Studies, offered by the School of Adult and Continuing Education, and the Master of Science in Information Technology Project Management, offered by the School of Communications and Information Systems.



> DOCUMENTARY CENTER PREMIERES *THAT'S AMORE*

The Center for Documentary Production and Study premiered its latest project, *That's Amore! The 10th Annual Dean Martin Festival*, in June during the 11th annual festival in Steubenville, Ohio. The 21-minute documentary highlights the 2005 festival, which honors the renowned comedian-singer born in Steubenville as Dino Crocetti. The video covers festival events including a parade, memorabilia auction, book signing, tribute show and interviews with festival attendees from around the world. **James Seguin, Ph.D.**, director of the center, served as executive producer, while RMU students **Dan Yost '07** and **Laura Dougherty '07** and staff TV engineer **Joe Hale** assisted in its production.

> BAYER CENTER OFFERS TECHNICAL HELP TO AREA NONPROFITS

For a second straight year, RMU's Bayer Center for Nonprofit Management teamed with the United Way of Allegheny County and the region's businesses in May to provide technical assistance to nonprofit agencies during the Technology Day of Caring. One of only a few such programs in the nation, the Technology Day of Caring places volunteers with technical expertise in agencies for one day to provide informal software training, networking and system upgrades, and/or technology mini-assessments and planning. Volunteers from organizations such as UPMC, Giant Eagle, Kirkpatrick & Lockhart Nicholson Graham LLP, PNC Financial Services, Ariba and Carmeuse North America devoted an estimated 150 hours to 30 agencies, providing \$15,000 worth of assistance.

> NURSING HONOR SOCIETY INDUCTS FIRST MEMBERS

Thirteen RMU nursing students were the first to be inducted into the School of Nursing and Allied Health's Nursing Honor Society in April. Those inducted were master's students **Pamela Aleck**, **Alix Alton**, **Mary Boyd**, **Kathryn Cremeans**, **Maureen Dunn**, **Patricia Kowalski** and **Rebecca Weatherly**, and undergraduate students **Deanna Clark**, **Michaelle Hernon**, **Emily Hojdila**, **Susan Lucot**, **Johnna Resek** and **Michele Silhanek**.

Several faculty and staff were also inducted, including: **Lynda Davidson, Ph.D., R.N.**, dean and associate professor of nursing; **Lynn George, Ph.D., R.N.**, associate dean and assistant professor of nursing; **Carl Ross, Ph.D., R.N.**, professor of nursing; **Patricia Fedorka, Ph.D., R.N.**, associate professor of nursing; **Marge Hardt DiCuccio, R.N.**, assistant professor of nursing; and **Valerie Howard, R.N.**, **Lisa Locasto, R.N.**, **Kathryn Perozzi, R.N.**, and **Kirstyn Zalice, R.N.**, all clinical assistant professors of nursing.

CAMPUS REPORT



THE BOYS NEXT DOOR

> COLONIAL THEATRE EXPANDS OFFERINGS IN 2006-07

RMU's Colonial Theatre presented its first summer production in a decade in August with Tom Griffin's *The Boys Next Door*, directed by **Barbara Burgess-Lefebvre, M.F.A.**, assistant professor of communications. This dramatic comedy, which examined the lives of four mentally challenged men under the supervision of an earnest but increasingly burned-out young social worker, marked the theatre's ninth production since its revival in 2003. A re-emerging summer stock program is just one of many exciting additions to RMU's theatre program, which will offer a theatre concentration within the Bachelor of Arts in Communications degree and a theatre minor for other majors beginning in Fall 2006.

The 2006-07 Colonial Theatre season includes productions of *Brighton Beach Memoirs* (Oct. 12-15), *West Side Story* (Nov. 8-12), *Assassins* (Feb. 14-17) and *Children of Eden* (March 21-25). For more information or to reserve tickets, visit www.rmu.edu/theatre or call 412-397-5454. Tickets are \$10 for adults and \$5 for students.

> WORLDVISTA COMMUNITY MEETING HELD AT RMU

More than 50 individuals from around the world gathered at RMU in June for the 13th WorldVistA Community Meeting. Entitled "Building Sustainable, Global, Collaborative Development of VistA," the meeting focused on community, business and software development for WorldVistA, a nonprofit, charitable organization dedicated to extending and improving the U.S. Department of Veteran Affairs' VistA (Veterans Health Information Systems and Technology Architecture) software package beyond its original use in veterans' hospitals and outpatient clinics.

Among the RMU faculty who participated were: **Valerie Harvey, Ph.D., R.T. (R), (ARRT)**, professor of computer and information systems and chair of WorldVistA's software development education team, who was instrumental in bringing the meeting to RMU; **Donald Caputo, Ph.D.**, associate professor of computer and information systems and a member of the meeting's program committee; and **Lawrence Tomei, Ed.D.**, associate vice president for academic affairs and associate professor of education. President **Gregory G. Dell'Omo, Ph.D.**, welcomed meeting attendees, while **David Jamison, J.D.**, dean of the School of Communications and Information Systems, provided remarks at a plenary session.



PEGGY MORRISON OUTON

> OUTON NAMED TO NONPROFIT TIMES POWER & INFLUENCE TOP 50

Peggy Morrison Outon, executive director of the Bayer Center for Nonprofit Management at Robert Morris University, was named to the *NonProfit Times'* Power & Influence Top 50 in August 2006. The first

individual from Pittsburgh ever to be named to the prestigious list, Outon and her fellow 2006 honorees were recognized at a gala on Sept. 15 at the National Press Club in Washington, D.C. Now in its ninth year, the annual listing recognizes upper-tier executives for their service to both the nonprofit sector and the people nurtured every day by more than one million charitable organizations.

> OTHER STAFF AWARDS AND APPOINTMENTS

Richard Portis, coordinator of the Veterans Business Outreach Center at RMU's Massey Center for Business Innovation and Development, received the U.S. Small Business Administration's Western Pennsylvania Veterans Small Business Champion of the Year Award during the 30th Annual Small Business Luncheon in May.

Pat Thompson, former associate director of human resources, was the recipient of the Eastern Region College and University Professional Association for Human Resources' (CUPA-HR) Member of the Year Award during a conference in Saratoga Springs, N.Y. She retired in April after nearly 24 years of service to RMU.

Kellie Laurenzi M'97 was appointed dean of enrollment services. In her 14 years at RMU, she has held progressively responsible positions in Enrollment Services, most recently as associate dean and director of graduate admissions.

FACULTY SPOTLIGHT

> **MARK ESCHENFELDER, PH.D.**, associate professor of economics, was installed as the 2006-07 president of the Pennsylvania Economic Association (PEA) during the annual conference in Indiana, Pa., in June.



> **STEPHEN FOREMAN, PH.D.**, acting associate vice president of academic affairs, head of the Department of Allied Health, and associate professor of health care administration and economics, was honored by the Pennsylvania chapter of the American College of Emergency Physicians (PaACEP) in recognition of his outstanding contributions to emergency medicine in the areas of research and advocacy.

> **LYNN GEORGE, PH.D., R.N.**, associate dean of the School of Nursing and Allied Health, received the Cameos of Caring Nurse Educator Award on Sept. 30 at the annual ceremony sponsored by the University of Pittsburgh School of Nursing. This is the first year awards were presented in the Nurse Educator category, which recognizes outstanding educators for their contributions to the profession.

> **VALERIE HARVEY, PH.D.**, professor of computer and information systems, was a member of a working group on Concept Inventories in Computer Science for the Topic Discrete Mathematics at the 11th Annual Conference on Innovation and Technology in Computer Science Education (ITiCSE), held in June in Bologna, Italy.

> **JOHN HAYWARD, PH.D.**, associate professor of engineering, was appointed director of graduate programs in the School of Engineering, Mathematics and Science. He will work to further develop and strengthen existing programs, explore new areas for growth and new methods for delivery, and cultivate relationships with organizations.

> **FREDERICK KOHUN, PH.D.**, associate dean of the School of Communications and Information Systems, and **Azad Ali D'03** received the Best Paper Award for *Dealing With Isolation Feelings in IS Doctoral Programs* at the InSITE (Informing Science + Information Technology Education) Joint Conference in the United Kingdom in June. The paper is scheduled for publication in the *International Journal of Doctoral Studies*.

> **ARIF SIRINTERLIKCI, PH.D.**, associate professor of engineering, was elected secretary/treasurer of the American Society for Engineering Education's (ASEE) Manufacturing Division Executive Board at the 2006 ASEE Annual Conference in Chicago in June. He was also re-elected leader of the ASEE Engineering Technology Division's Industrial Engineering Technology/Industrial Technology Interest Group.

> **LEONARD A. ASIMOW, PH.D., A.S.A.**, professor of actuarial science and mathematics, was named head of the Department of Mathematics. He replaces **MARK MAXWELL, PH.D., A.S.A.**, who stepped down to devote more time to teaching, research and serving as program director of actuarial science.



> **BEATRICE GIBBONS, ED.D.**, was named department head and associate professor of elementary education. She previously was director of the School of Education and coordinator of elementary education at California State University, Bakersfield.

> **JEFFERY GUILER, PH.D.**, associate professor of management, was named head of the Department of Management. He replaces acting head **DAVID SYNOWKA, PH.D.**, who resumed his responsibilities as program director of sport management.

> **KAMALA RAGHAVAN, D.B.A.**, assistant professor of accounting, was named head of the Department of Accounting and Taxation. She replaces **JAMES REBELE, PH.D.**, who resumed his role as professor of accounting.



Rooney Visiting Scholar From India

ORDETTA MENDOZA, PH.D., head of the department of bioinformatics at Stella Maris College in Chennai, India, was the Summer 2006 Rooney Visiting Scholar at RMU. During her stay, Mendoza presented lectures on the field of bioinformatics as well as on Mahatma Gandhi. Her visit was co-sponsored by the School of Engineering, Mathematics and Science, the School of Communications and Information Systems, and the Office of Academic Affairs.

STUDENT SPOTLIGHT

> MUSIC VIDEO SELECTED FOR BESTFEST

A video produced by RMU students for the band Identity X was selected for the BestFest America 2006 Student Film Festival in La Jolla, Calif., in July. Produced by **Darin DiNapoli** (communications), **Brad Grimm** (media arts) and **David Toole** (management), the video for the song "Archetype" was one of just three music videos chosen. Nearly 1,000 students around the world submitted entries, with only 60 projects selected.

> MORE VIDEO AWARDS

Several RMU students earned Videographer Awards for projects completed through the Academic Media Center. **Justin Seaman** (media arts) and **Ken Vedder** (communications) received Awards of Distinction for their "Fallen Heroes" video and LaneVision infomercial, while **Lindsay Berggren** (media arts) and **Brian Tirpak** (communications) received honorable mention for their FedEx training video.

> MEDIA ARTS WORKS EARN NEOGRAPHICS AWARDS

Four media arts students received Graphic Arts Association's Neographics Awards in May in Philadelphia. **Katie Smerick's** shopping bag design was selected as Best of Category, while **Michele Roth** and **Philip Berwick** won Franklin Awards of Excellence for their Macy's shopping bag designs. **Matthew Bowytz** won a Franklin Award of Excellence for his CD design for "The Secret Life of Robots."

> FIRST B.S.N. GRADUATES ACE NCLEX EXAM

All 13 of RMU's inaugural Bachelor of Science in Nursing (B.S.N.) graduates passed the National Council Licensure Examination (NCLEX) to earn R.N. credentials this spring. RMU's 100 percent pass rate compares favorably to the overall pass rate of 73.9 percent for the exam.

> FEI SCHOLAR

Finance major **Ashley Himes** was named an FEI Scholar for 2006-07 by the Pittsburgh chapter of Financial Executives International (FEI) and received a \$1,000 scholarship award.

> PICPA SCHOLARSHIP

Aaron Leroy (accounting) received a scholarship from the Pittsburgh chapter of the Pennsylvania Institute of Certified Public Accountants (PICPA) during the annual meeting in May.

> HERE SHE IS...MISS PITTSBURGH

Finance major **Kristina Lippert** won the title of Miss Pittsburgh 2006 during the annual pageant in June. She also received the pageant's Best Stage Presentation award.



> STUDENTS WIN SUPPLY CHAIN MANAGEMENT CHALLENGE

For the fourth time in five years, RMU won the Council of Supply Chain Management Professionals' National College Challenge, held at Duquesne University in March. The event consists of students answering questions in a college bowl format. RMU's team included **Christian Shaffer** (organizational studies), **Justin Schuller** (supply chain management), **Lynn Welch** (management) and **Ashlee Summerville** (logistics management).

> AMA CHAPTER HONORED

RMU's chapter of the American Marketing Association (AMA) received a Best in Fundraising Award during the AMA's International Collegiate Conference in Orlando, Fla., in March. Students attending were marketing majors **Nate Budziszewski**, **Ashley Gavlak**, **Tara Manna**, **Sarah Spec**, **Meghan Collins**, **Kristian Seaman** and **Amber Paranick**, and finance major **Brandon Ambrose**.



CHILEAN DOCUMENTARY •

Five RMU students traveled to Valparaiso, Chile, for three weeks this spring as part of the Center for Documentary Production and Study's new exchange program with the Universidad de Valparaiso (UV). Media arts majors **BARRY BOGOVICH**, **LAURA DOUGHERTY**, **JEREMY MCCANN** and **CORRY VARGO**, communications major **KATIE LEWANDROSKI**, and media arts alumna **ERICA PEIFFER '05** worked with faculty and students in UV's film school to produce documentaries, sat in on classes and toured the area. The universities plan to expand their relationship to include semester and yearlong study abroad opportunities, faculty exchanges and research initiatives. The Center has similar programs with the University of Applied Sciences in Germany and the University of Bahcesehir in Turkey.

EXCHANGE PROGRAM

SCOREBOARD

★ RMU UNVEILS ★ ★ NEW ATHLETIC LOGO ★

On August 10, 2006, the Robert Morris University Department of Athletics formally unveiled a new logo family to be used on apparel, uniforms, publications, merchandise and competition venues.

The process of designing a new athletic logo began in the spring of 2006. Rickabaugh Graphics, a design firm based in Columbus, Ohio, was chosen to create the design. Rickabaugh has been creating collegiate sports identities for schools across the nation for the last decade.

"We wanted to adopt a new look that would be embraced by student-athletes, coaches and administrators, as well as the University community as a whole," said Associate Director of Athletics Marty Galosi. "We wanted to give people something exciting to rally around."

A 25-person logo selection committee, comprised of student-athletes, student leaders, faculty, staff, coaches and alumni, was assembled to provide input as to how the new logo should look. The final design was chosen by the committee and presented to 55 focus group members across campus to help administrators reach the final decision.

The new logo design incorporates the Colonial as part of the department's identity and is tough and aggressive, yet maintains a traditional collegiate style. A look at the new RMU athletic logo family:



MEN'S AND WOMEN'S GOLF

Led by Head Coach **Jerry Stone**, the RMU men's team posted an eighth-place finish at the 2006 Northeast Conference (NEC) Championships, while the women's team finished sixth. Sophomore **Jimmy Tomaseski**, who posted four top 10 finishes during the season and had the team's best season average (76.7), placed 10th with a two-day score of 154 to garner All-NEC accolades. Sophomore **Rachael Malenich**, who had the women's best season average (83.6), garnered All-NEC honors after finishing fourth with a two-day score of 158.



FRANK KEEL

MEN'S LACROSSE

In just their second season, the Colonials tallied an overall record of 1-13, including 0-5 in the Colonial Athletic Association (CAA). Led by Head Coach **Bear Davis**, RMU posted its first-ever victory with a 9-1 decision over Seton Hill. Sophomore midfielder **Andrew Watt** led the Colonials in both goals (16) and points (19) in 2006, while freshman attack **Frank Keel** finished with 11 goals and five assists for 16 points. Keel garnered a spot on the 2006 CAA All-Rookie Team along with

SCOREBOARD

T.J. Sarnese, who won nearly 45 percent of his face-offs (65-for-148).



WOMEN'S LACROSSE

Also in its second season, the RMU women's team posted an overall record of 3-14, including a 2-6 NEC mark. Under the guidance of Head Coach **Katy Phillips**, the Colonials earned their first-ever victory with an 18-14 win over Howard, and went on to garner league wins over Central Connecticut State and St. Francis (Pa.). RMU was led by freshman attack **Jennifer Collins**, who posted a team-high 45 goals and 57 points. Freshman attack **Emily Tomlinson** finished with a team-high 18 assists.



MEN'S OUTDOOR TRACK & FIELD

Under the direction of fifth-year Head Coach **Michael Smith**, the Colonials recorded their best NEC Championship finish since 2004, placing third. Freshman **Andrew**

McCloskey was named Rookie of the Meet after finishing second in the 200 meters (21.93), fourth in the 100 meters (11.07) and running the lead leg for the 4x400-meter relay team, which finished third (3:16.25). The lone individual champion for the Colonials was sophomore **Mark Caskey**, who posted a season-best jump of 6'10.75" and beat out junior teammate **Jeff Witmyer** (6'10.75") for the high jump title. McCloskey, Caskey and Witmyer took home All-NEC honors, as did sophomore **Phillips Thompson**, who finished second in the 3,000-meter steeplechase (9:28.11), junior **Adam Woodford**, who placed second in the triple jump (47'1"), and junior **Josh Ghaly**, who was second in the pole vault (14'11").

WOMEN'S OUTDOOR TRACK & FIELD

Also under the guidance of fifth-year Head Coach **Michael Smith**, RMU finished fifth at the 2006 NEC Championships. Three Colonials brought home individual titles in the field events. Senior **Erika Frazee** won the high jump with a season-best mark of 5'4.5", while junior **Brittany Humphress** won the triple jump by traveling 39'2.50", a season-best and IC4A qualifying distance. Junior **Stephanie Kuhn** continued the Colonials' dominance in the javelin, becoming the third consecutive RMU athlete to win the event with a season-best and NCAA-qualifying heave of 150'1". At the NCAA East Regional, Kuhn finished seventh in the javelin

(154'5"). Joining Frazee, Humphress and Kuhn as All-NEC performers was senior **Katie Fisher**, who finished second in the hammer throw with a toss of 168'1".

SOFTBALL

Under the guidance of 16th-year Head Coach **Craig Coleman**, RMU claimed its second straight NEC regular-season championship, tying Long Island for the crown with a 17-3 league record (26-19 overall). The Colonials fell to the Blackbirds in the NEC Tournament championship game, however. Junior catcher **Jill Dorsch** posted a team-high .396 batting average and garnered All-NEC First-Team honors, as did junior shortstop **Jill Spargo** and junior first baseman **Ashlee Smith**. Garnering All-NEC Second-Team accolades were senior infielder **Keri Meyer**, junior pitcher **Danielle Cohen** and senior designated player **Kali Byers**. RMU established a new team record for home runs with



34 on the year. Smith led the team in home runs (9) and RBI (36), while Byers wrapped up her career as RMU's all-time leading power hitter with 35 career homers. Meyer finished her career as the program's all-time leading hitter with a batting average of .342.

MEN'S AND WOMEN'S TENNIS

Under the guidance of Head Coach **Misha Kouznetsov**, the RMU men's team finished 4-13 overall (3-2 NEC), while the women's team posted a 2-10 record (1-1 NEC). The men fell to Fairleigh Dickinson in the semifinals of the NEC Tournament, while the women fell in the quarterfinals of the tourney. The men's squad was led by sophomore **David Yokitis**, who finished with a 6-13 singles record. Four players on the women's team won a pair of singles matches, including junior **Mary Esch**.





*Annual Report
of the President
2005 - 06*

JAMES A. RUDOLPH
THOMAS P. ARNOLD '02 MEd
JINIE GRENALDO '03
MICHEL K. BOYER '04
DUNCAN JR. M '03

From its humble beginnings as a small business school through its recent expansion to a comprehensive regional university, Robert Morris University has stayed true to its mission of providing students with the foundations for a successful career for 85 years. And through those years, one thing consistently has set RMU apart from its competitors – a progressive, practical mindset that consistently drives the institution to continue evolving to meet the rapidly changing needs of students and employers.

In 2005-06, the continuing evolution of RMU was evident in a number of significant ways. Not only did a transition in leadership fail to slow the University down, it reenergized the institution and its forward-thinking mindset. While growth continued on all levels, the blueprint for an even more promising future was being drawn. Here's a look at some of the key events and developments that occurred in 2005-06:

CHANGING OF THE GUARD: THE DELL'OMO ERA BEGINS

In its 17 years under the visionary leadership of President Edward A. Nicholson, Ph.D., Robert Morris University experienced dramatic changes that encompassed nearly every aspect of University life: enrollment, academics, faculty, research, facilities, development, finances and more.



The 2005-06 academic year began with yet another dramatic change, only this time, it was a changing of the guard. Nicholson, who had announced his retirement a year earlier, stepped down on July 31, 2005, and was succeeded by Gregory G. Dell'Omo, Ph.D., on Aug. 1, 2005. Dell'Omo was officially sworn in as RMU's seventh president at a formal inauguration ceremony on campus on Friday, Nov. 11, 2005.

But while the face of the presidency changed, the University's progressive character did not. A warm, ebullient leader who previously was vice president for external affairs at Saint Joseph's University, Dell'Omo's vision for RMU is similar to Nicholson's: focused growth that accelerates the development and communication of a key value proposition – that RMU provides an affordable, high-quality, comprehensive, private university educational experience.

By the end of his first year, several of Dell'Omo's major initiatives were completed or well underway: the relaunch of an alumni magazine (*Foundations*), a redesign of the website (www.rmu.edu), the launch of a new athletic logo (see page 6), the development of a new 10-year strategic plan, the planning for a School of Osteopathic Medicine, the expansion of international opportunities for faculty and students, the continued growth in enrollment, and the enhancement of the living-learning environment on campus.



“This is an exciting time at Robert Morris University, a time of seemingly unlimited possibilities and potential,” said Dell’Omo in his inaugural address. “As our faculty, students and programs continue to grow, so do the opportunities available to us throughout the region and the world.”

Nicholson, who remains on the faculty as a professor of management, was honored for his legacy of accomplishments at RMU and his years of distinguished community service with the University’s prestigious Patriot Award on Oct. 2, 2005.

JOE WALTON STADIUM OPENS ON CAMPUS

After 11 years of playing their home football games just up the road at Moon Stadium, the Robert Morris University Colonials were finally able to say, “Welcome to our house” in Fall 2005 with the much-anticipated opening of Joe Walton Stadium. The stadium immediately provided a whole new energy and excitement to the RMU campus on fall football Saturdays.



The 3,000-seat, artificial turf facility is named for the former NFL player and coach who has served as head coach of the Colonials since the program’s inception in 1994. During his tenure at RMU, Walton has guided the Colonials to five Northeast Conference championships and two No. 1 national rankings, in 1999 and 2000.

Adjacent to the stadium is a new 20,000-square-foot athletic administration building, which houses offices for athletic coaches, staff and administration, a strength and conditioning room, academic study and tutoring rooms, and football equipment, training and locker rooms.

The stadium was officially christened at a press conference and ribbon-cutting ceremony on July 20, 2005. Among those in attendance was former Colonial Hank Fraley, the current starting center for the NFL’s Cleveland Browns, who gave an emotional speech about the profound effect Walton has had on his life.

The Colonials played their inaugural game in Joe Walton Stadium on Saturday, Sept. 17, earning a decisive 49-13 victory over Butler in front of a standing-room-only crowd of 3,516 raucous fans. Just two weeks later, the stadium overflowed with a record crowd of 3,784 Homecoming fans, who watched RMU fall in a valiant effort to St. Francis, 35-28. On the season, the Colonials went 2-3 in their new home and averaged nearly 2,500 fans per home game.

Funding for the \$10 million facility was provided in part by the *Scoring Drive* fund-raising campaign, which brought in nearly \$3 million in gifts and pledges. Legendary Washington Redskins quarterback Joe Theismann, who attributes his success as an NFL player to Walton, served as the honorary chair of the campaign.

JOHN JAY CENTER RENOVATIONS COMPLETED

In Fall 2005, Robert Morris University also celebrated the opening of the newly renovated John Jay Center, which now serves as home to the School of Nursing and Allied Health and the School of Engineering, Mathematics and Science.

A ribbon-cutting ceremony was held on Sept. 12, 2005, for the reopening of the 37-year old facility, which formerly housed the football and crew coaches’ offices, the University’s mailroom and copy center, intramural offices

SCHOOL OF OSTEOPATHIC MEDICINE PLANNED

In Fall 2005, Robert Morris University announced its intention to expand its reach into the health care field by launching a School of Osteopathic Medicine – the first in southwestern Pennsylvania and the third in the state – with hopes of enrolling its first class by Fall 2008.

The launch of a medical school fits RMU's mission of developing practical, relevant degree programs that serve the needs of students and employers in the region. Western Pennsylvania will have a projected shortfall of 2,900 to 4,200 doctors by 2020, and RMU hopes to address this issue by increasing the supply of qualified physicians by keeping half of each graduating class in the region.

The University hopes to build on its recent success in launching health care degree programs with this new school. RMU launched undergraduate and graduate nursing degree programs in 2003 to address the region's critical nursing shortage, and 160 students were enrolled in these programs this past year.

Oliver W. Hayes, D.O., FACEP, was named dean of the planned School of Osteopathic Medicine in Fall 2005. Dr. Hayes previously was chair of the Department of Internal Medicine at the Michigan State University College of Osteopathic Medicine. In Spring 2006, the Office for the Development of a School of Osteopathic Medicine was created, and Linda Berardi-Demo was named associate dean for student affairs. She previously was dean of enrollment at RMU and director of admissions and financial aid at the University of Pittsburgh School of Medicine.

The launch of the medical school is dependent on various approvals, including the Pennsylvania Department of Education (PDE) and the American Osteopathic Association (AOA). Applications and feasibility studies were prepared in 2005-06 for submittal to these agencies in summer 2006, with site visits anticipated in fall 2006.

If approved, the school will be housed in a state-of-the-art facility adjacent to John Jay Center. Burt Hill Architects of Butler, Pa., was chosen to design the building, with the design phase to be undertaken in 2006-07. Plans are to break ground in 2007 and complete construction by summer 2008.



and a ballroom. Guest speakers at the ceremony included U.S. Rep. Tim Murphy and State Rep. Mark Mustio.

Five new science teaching/research laboratories on the building's main level feature state-of-the-art instructional technology, including wireless connectivity and multimedia instruction. The laboratories are designated for studies in biology/microbiology, anatomy and physiology, chemistry, physics, and environmental science. Also on the main level is a cutting-edge nursing laboratory that features the latest in health care technology, including bedside computers and a SimMan patient simulator to enhance nursing students' clinical skills practice.

The main level of the building also includes new administrative offices for the School of Engineering Mathematics and Science and the School of Nursing and Allied Health. Nursing, science and mathematics faculty are housed in a new open, two-level floorplan of offices accessible from the main level.

The Engineering Department, the Center for Applied Research in Engineering and Science (CARES) and The Learning Factory engineering laboratory remain housed on the lower level of John Jay; however, the laboratory space was expanded and enhanced to include a cold isostatic compaction press for powder metallurgy.

The extensive renovations to John Jay Center were funded in part by the *Partners for Progress* fund-raising campaign, which brought in approximately \$1.3 million in gifts and pledges from both public and private sources.

NEW PROGRAMS ENHANCE AND BROADEN CURRICULUM

One of the hallmarks of Robert Morris University's growth over the past decade has been the continuous expansion of the curriculum to serve a wider array of students and employers. In 2005-06, RMU launched several new academic programs, including:

B.S. in Communications: Applied Journalism and Theatre Concentrations

– In each of these new concentrations, students take foundation courses as well as specialty courses to focus their skills. Journalism students are encouraged to participate in the new student newspaper (*The Sentry*), launched in Spring 2006, and/or the student television station (RMU-TV), while theatre students are encouraged to participate in Colonial Theatre productions. Theatre is also offered as a minor for non-communications majors.



B.S. in Environmental Science: Pre-Medicine Concentration

– This concentration prepares students to pass the MCAT and be accepted into medical or other professional health schools. The program is also offered as a minor to students in other majors.

B.S. in Health Services Administration – This undergraduate degree prepares adult students to become leaders in the health care industry. Students develop a comprehensive understanding of the industry in order to develop a focused leadership style adapted to the reality of patient care delivery.

Pre-Law Advisory Program

This program is for undergraduate students of any major who wish to attend law school or pursue legal careers.

It includes academic advising, shadowing opportunities, internship placement, a speakers bureau, law school advising and LSAT preparation.

M.S. in Human Resource Management – This degree addresses the need for competent human resource managers with an advanced understanding of compensation, benefits administration, employee health care, retirement planning, pensions, finance and decision sciences.

M.S. in Instructional Leadership: Elementary Education, English Education and Mathematics Education Concentrations

– These new concentrations are designed for certified teachers who wish to enhance their experience or for those currently pursuing teacher certification in these areas.

M.S. in Organizational Studies – This degree prepares students for career advancement by developing a set of skills essential to success in the workplace, such as communications, interpersonal relations, leadership, ethics and teamwork. Students may concentrate in leadership or employee relations.

ENROLLMENT GROWTH SPURS NEW RESIDENCE HALLS

Enrollment at Robert Morris University continues to boom, and RMU welcomed a record freshman class for the third consecutive year with 671 students in Fall 2005 – an increase of 42 percent in just three years.

Not only are more students choosing RMU to provide the foundations for a successful career, but they're also choosing to live on campus to be a part of the growth and excitement. As a result, demand for campus housing has grown tremendously over the past few years. To meet this demand, the University purchased and renovated one new facility and constructed another to accommodate 214 additional resident students by Fall 2006.

In January 2006, RMU opened Braddock Hall, located at 200 Grant Drive, across University Boulevard from campus. Formerly an assisted living facility, the 26,000-square-foot, three-story building was purchased and extensively renovated by the University in 2005. Braddock Hall houses 62 upperclass students in traditional single and double rooms with semi-private half baths.





University's current status in Fall 2005. In January 2006, trustees, administrators, faculty and staff gathered to evaluate the findings and establish five major initiatives that will serve as the foundation for the strategic plan:

1. Establish RMU's Institutional Profile – What is the desired student mix for RMU, including size, geographic origin, quality, diversity, etc.?
2. Improve Academic Quality – How can RMU raise the bar for all academic programs?
3. Improve Infrastructure – What types of facility and technology improvements are necessary to support the University's plans?
4. Solidify and Leverage the RMU Brand – How can RMU establish a reputation for high-quality education in its primary marketplace and beyond?
5. Strengthen RMU's Financial Position – How can RMU enhance and diversify revenue streams to support its capital position?

The next phase of the process begins in Fall 2006, when strategic workgroups comprised of volunteers from across the University will formulate three to five strategies for each initiative. Once those strategies are approved, the workgroups will draft implementation plans and assessment measures for each. The target date for completion of the strategic plan is the end of Spring 2007.

On a parallel track is the development of a new master plan to guide campus facility development over the next 10 to 15 years. Major elements of the master plan announced to the University community in Spring 2006 include:

- Developing a loop road around campus;
- Maintaining parking on the perimeter of campus/creating a more pedestrian central campus;
- Developing an academic quad around Nicholson Center;
- Developing a new student housing quad; and
- Constructing a new facility for the planned School of Osteopathic Medicine.

PITTSBURGH SPEAKERS SERIES STILL GOING STRONG

In its fourth season, the Pittsburgh Speakers Series presented by Robert Morris University continued its strong tradition, bringing seven more high-profile speakers to Pittsburgh and once again selling out 2,700-seat Heinz Hall. The seven memorable evenings enlightened, entertained, informed and inspired audiences by providing the opportunity to experience and learn



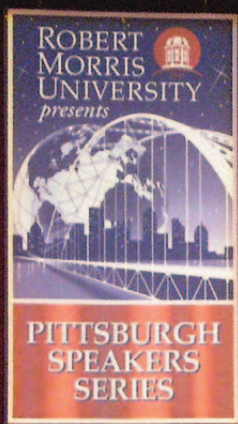
All rooms are wired for Internet access. The student lounge area includes a large-screen TV as well as ping-pong, foosball and pool tables. The building also houses administrative offices for the Information Technology and Services Department, as well as a state-of-the-art newsroom for *The Sentry* student newspaper.

In summer 2005, RMU began construction on Concord Hall, a new \$10 million apartment-style residence hall on campus, located just behind Lexington Hall (formerly known as the Student Apartments). The five-story building, set to open in Fall 2006, will house 152 upperclass students in state-of-the-art, contemporary living spaces. Each apartment includes four single bedrooms, a fully equipped kitchen and furnished living room area. All rooms are wired for Internet access.

The addition of these two new facilities enables the University to provide housing for more than 1,300 resident students beginning in 2006-07.

STRATEGIC PLAN TO LAY FOUNDATION FOR RMU'S FUTURE

One of Gregory G. Dell'Omo's first initiatives as Robert Morris University's new president was to begin crafting a new 10-year strategic plan that will provide a framework to steer RMU's future course in the decade ahead. Dell'Omo initiated this process by assessing the



from some of the most celebrated, captivating and influential personalities of our time. Two of the speakers also held more intimate lectures earlier in the day on campus exclusively for RMU faculty, staff and students.

Beck Weathers – The miracle survivor of an ill-fated Mount Everest expedition, Weathers' September lecture had all of the elements of a great adventure.

Robert Redford – The renowned actor, producer, Academy Award-winning director, independent film champion and environmental activist spoke to a packed house in November.

Bill Moyers – An Emmy Award-winning journalist, Moyers is also the former deputy directory of the Peace Corps and White House press secretary. His visit in December included an on-campus lecture.

John Major – The former prime minister of Great Britain provided a unique look at the changing global landscape. He also held an on-campus lecture during his visit in January.

Robert Ballard – One of the world's foremost oceanographers and the discoverer of the Titanic, Ballard told his intriguing story during a February visit.

Mark Russell – A political satirist and musical humorist, Russell is America's quintessential political dragon-slayer. He amused the Heinz Hall crowd in March.

Christine Todd Whitman – The former governor of New Jersey and administrator of the Environmental Protection Agency closed out the series in April.

The lineup announced for 2006-07 includes Nora Ephron, James Lovell, Colin Powell, Christiane Amanpour, Michael Medved, Robert F. Kennedy Jr. and Ari Fleischer.

SHINING MOMENTS IN RMU ATHLETICS

Robert Morris University athletics continued its strong tradition of success both on and off the field with some shining moments in 2005-06.

Two squads brought home some new hardware for the RMU trophy case by earning conference championships. The men's soccer team captured its third Northeast Conference Tournament title – and the NCAA Tournament berth that went along with it – while the women's softball team took home its fourth NEC regular-season championship.

The year also marked the debut of RMU's 23rd intercollegiate sport – women's ice hockey. The only NCAA Division I women's team in Pittsburgh, the Colonials collected five wins in their inaugural season (5-24-2) and saw freshman goalie Brianne McLaughlin lead the nation in saves with 1,088.

A total of 46 RMU student-athletes earned all-conference honors in 2005-06, including two NEC Rookies of the Year: Jeremy Chappell in men's basketball and Alaina Gibson in women's volleyball. Track and field coach Michael Smith also was named NEC Coach of the Year after his team's second-place finish at the NEC Indoor Championships.

The Colonials continued to excel in the classroom as well. Nine student-athletes earned spots on *ESPN The Magazine's* District II Academic All-America teams,



and 118 were named to the NEC Academic Honor Roll. Thirteen of RMU's 23 varsity sports had team GPAs of 3.0 or higher, while 60 percent of the 550 student-athletes achieved the same feat individually.

RMU STUDENTS SUCCEED, GIVE BACK

A key part of what differentiates Robert Morris University from its competitors is its practical focus on providing students with the "foundations for success." More specifically, RMU gives students the skill, support, experience and confidence they need not only to land a job, but also to hit the ground running upon graduation.

Learning at RMU is hands-on, which means that students get a taste of what it's like to work in their specific industry while undergraduates. It also means that students often have the opportunity to showcase their work and compete for awards at the regional, national and even international levels.

In 2005-06, several students received industry awards for their work, most notably the students in RMU's highly respected TV/video production program. Five students collected a total of 13 national and international awards for video projects completed through the Academic Media Center, including Telly Awards, Aegis Awards, Videographer Awards, Communicator Awards and a Broadcast Education Association Award. The students' works ranged from training videos to public service announcements to infomercials to music videos.

Another thing that sets RMU apart is its emphasis on encouraging community service among its students. In 2005-06, a total of 1,571 RMU students participated

in 178 service projects, either through the Office of Student Community Service, through various student clubs and projects, or as individuals. Most notable were the numerous efforts to aid victims of the devastating hurricanes in the Gulf Coast region. In addition to organizing drives to raise funds and supplies for hurricane relief, several students spent their spring breaks providing hands-on assistance with the rebuilding efforts.

FACULTY ACHIEVEMENTS ENHANCE RMU'S REPUTATION

It is the faculty who often fuel the academic rise of an institution, and in 2005-06, the faculty continued to help enhance Robert Morris University's growing academic reputation not only through superior teaching, but also through awards, publications, research and more.

Numerous faculty members were recognized for achievements in their respective fields, most notably: Carl Ross, Ph.D., professor of nursing, who received both the Nurse as Global Citizen Award and the District 6 Distinguished Nurse of the Year Award from the Pennsylvania State Nurses Association; Stephen Foreman, Ph.D., associate professor of health care administration and economics, who received an award from the Pennsylvania chapter of the American College of Emergency Physicians for his outstanding contributions to emergency medicine research and advocacy; and Daria Crawley, Ph.D., assistant professor of management, who received Duquesne Light's African-American Leadership Award.

RMU faculty also made names for themselves in the publishing world, including Daniel P. Barr, Ph.D., assistant professor of history, who published two books, and Jon Shank, Ed.D., professor of education, who celebrated the printing of the one millionth copy of his computer keyboarding textbook.

In addition, the Rooney Visiting Scholars Program brought three international faculty members to campus to further enhance academic programs and research: Biswanath Samanta, Ph.D. (Summer 2005), an associate professor of engineering at Sultan Qaboos University, Sultanate of Oman; John Campbell, Ph.D., D.Eng. (Fall 2005), an emeritus professor of metallurgy and materials at the University of Birmingham, United Kingdom; and Daniel Silke (Spring 2006), an independent political analyst specializing in South African political and economic issues.



Board of Trustees 2005-06

CHAIRMAN

JOSEPH W. NOCITO '70

President
Nocito Enterprises Inc.

VICE CHAIRMAN

PATRICK A. GALLAGHER

President
PGT Trucking Inc.

VICE CHAIRMAN

W. KEITH SMITH

Senior Vice Chairman (Retired)
Mellon Financial Corp.

SECRETARY

SIDNEY ZONN, ESQ.

Managing Partner
Littler Mendelson P.C.

COLIN BAILEY

Chief Executive Officer
Spectra-Kote

MICHAEL C. BARBARITA '22

Managing Director and Head of Office
Marsh USA Inc.

JEFFREY S. BROADHURST

President
Eat'n Park Restaurants

CATHERINE A. CAPONI '77 M'81

Vice President
Artemis Strategies

GARY R. CLAUS '74

Partner and Tax Site Leader –
Pittsburgh Office
PricewaterhouseCoopers LLP

CHARLES L. COST

Chief Executive Officer
Cost Co.

DAVID E. DICK '70

Co-Chairman of the Board
Dick Corp.

BEVERLYNN ELLIOTT

Civic Leader

WELLING W. FRUEHAUF '71 M'01

President and Chief Executive Officer
Fruehauf Group Ltd.

DONALD P. FUSILLI JR.

President and Chief Executive Officer
Michael Baker Corp.

RICHARD J. HARSHMAN '78

Senior Vice President, Finance,
and Chief Financial Officer
Allegheny Technologies Inc.

CHARLES I. HOMAN, P.E.

Executive Vice President
Post, Buckley, Schuh & Jernigan

DENISE JOHNSON

(SERVED THROUGH 7/05)
Marketing Consultant

STEPHEN W. KLEMASH '82

Managing Partner
Ernst & Young LLP

RAYMOND W. LEOEUF

Chairman and Chief Executive Officer
(Retired)
PPG Industries Inc.

HELEN D. LEMMON

Principal in Charge, Pittsburgh Office
Ryan & Company Inc.

DAVID J. MALONE, CLU, CHFC

Principal and Chief Financial Officer
Gateway Financial

BARBARA A. MCNEES

President
Greater Pittsburgh Chamber of Commerce

FRANK A. MOLINERO '72

Senior Vice President
Oxford Development Co.

GERD D. MUELLER

Executive Vice President and Chief
Administrative and Financial Officer
(Retired)
Bayer Corp.

ROBERT W. ROGERS

President
Development Dimensions International

PATRICIA R. ROONEY

Civic Leader

JAMES A. RUDOLPH

Chairman of the Board
McKnight Group

EUGENE A. SALVADORE

Chairman
Convergent Search Group Inc.

WILLY SCHERF

President and Chief Executive Officer
Bayer Corporate and Business Services LLC

GREGORY R. SPENCER

Chief Executive Officer
Randall Enterprises LLC

ROBERT W. STASIK '75

Executive Vice President
Mellon Bank

THOMAS W. STERLING

Senior Vice President, Human Resources
and Business Services
U.S. Steel Corp.

MELVIN D. TEETZ '62

Vice President of Finance (Retired)
United Parcel Service Inc.

THOMAS K. WHITFORD

Executive Vice President
PNC Financial Services Group

SHARON K. WILLIAMS

(SERVED THROUGH 2/06)
President and Chief Executive Officer
Paradigm Development International

ALUMNI REPRESENTATIVE

D. MICHAEL JAMISON M'95

President
OhioAmerican Energy Inc.

TRUSTEES EMERITUS

CAESAR A. GAROFOLI, M.D.

Senior Staff (Retired)
St. Clair Memorial Hospital

ALVIN ROGAL

Chairman
Hilb Rogal & Hobbs Co.

THERESA L. SCHEETZ

Partner
First Side Partners

CHARTER TRUSTEES

WILLIAM J. COPELAND

Vice Chairman of the Board (Retired)
PNC Bank

ELIZABETH B. DICKEY

Civic Leader

NICK H. PRATER

President and
Chief Executive Officer (Retired)
Mobay Corp.

JOHN W. VIEHMAN

Vice President, Finance (Retired)
H. H. Robertson Co.

UNIVERSITY EXECUTIVE OFFICERS 2005-06

GREGORY G. DELL'OMO, PH.D.

President

WILLIAM J. KATIP, PH.D.

Provost and Senior Vice President
for Academic and Student Affairs

DAN W. KIENER

Senior Vice President for
Business Affairs

KAREN B. CRENSHAW

(SERVED THROUGH 12/05)
Vice President for
Institutional Advancement

PETER K. FAIX

Vice President for Human Resources

JEFFREY A. LISTWAK

Vice President for Financial Operations

J. DANIEL MURPHY

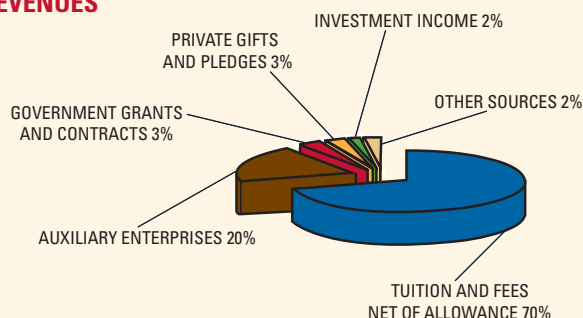
(SINCE 1/06)
Interim Vice President for
Institutional Advancement

Financials

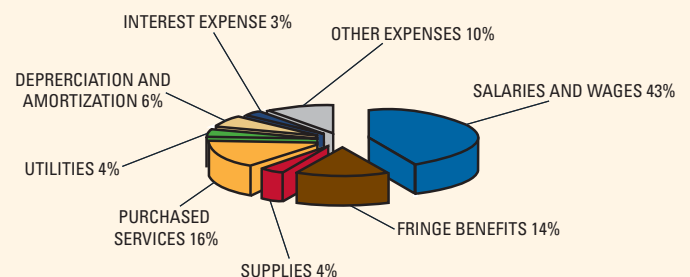
CONSOLIDATED STATEMENT OF CHANGES IN NET ASSETS FOR THE FISCAL YEARS ENDING MAY 31, 2006, AND MAY 31, 2005

OPERATING REVENUE	2005-06	2004-05
Tuition and Fees Net of Allowance	52,821,304	47,877,526
Auxiliary Enterprises	14,589,064	13,341,982
Government Grants and Contracts	2,195,069	2,509,141
Private Gifts and Pledges	2,169,688	4,350,466
Investment Income	1,248,123	548,346
Other Sources	1,557,576	1,187,338
Perkins Loan Program Match	-	18,232
Total Operating Revenue	74,580,824	69,833,031
EXPENSES		
Salaries and Wages	31,187,366	29,120,347
Fringe Benefits	9,948,758	9,256,218
Supplies	2,545,275	2,417,977
Purchased Services	11,460,294	10,345,601
Utilities	2,980,512	2,421,368
Depreciation and Amortization	4,663,101	4,642,252
Interest Expense	2,031,037	1,691,707
Other Expenses	7,463,807	5,964,233
Mandatory Transfer for Student Loan	-	18,232
Total Expenses	72,280,150	65,877,935
Increase/(Decrease) From Operations	2,300,674	3,955,096
NON-OPERATING REVENUE		
Loss on Defeasance of Debt	(746,794)	-
Realized Gains/(Losses) on Investments	244,886	21,497
Unrealized Gains/(Losses) on Investments	1,210,319	1,256,416
Total Non-Operating Revenue	708,411	1,277,913
Cumulative Effect of Change in Accounting Principle	(492,000)	-
Total Change in Net Assets	2,517,085	5,233,009
Net Assets at Beginning of Year	63,333,238	58,100,229
Net Assets at End of Year	65,850,323	63,333,238

REVENUES



EXPENSES



Honor Roll of Donors 2005-06

As Robert Morris University continues to refine its focus and prepare for the challenges of the future, it must continue to build a supportive network of donors. Through their financial support, thousands of corporations, foundations, alumni, faculty, staff, students, parents and friends have continued to demonstrate how much they value the distinctive educational experience that Robert Morris University offers. The University is deeply grateful for their support made from June 1, 2005, through May 31, 2006.

D = Doctoral degree
M = Master's degree
+ = Deceased

PRESIDENT'S COUNCIL

The President's Council consists of those individuals, corporations and foundations that have made gifts at the following levels: Founders Society, Liberty Society, Patriots Club, Colonial Partners, Independence Society and RMU Society.

FOUNDERS SOCIETY

GIFTS OF \$100,000+

B. Kenneth Simon Educational Foundation
Bayer Foundation
The Heinz Endowments
Massey Charitable Trust
PGT Trucking, Inc.
Mr. & Mrs. Daniel M. Rooney

LIBERTY SOCIETY

GIFTS OF \$50,000-\$99,999

Anonymous
Buhl Foundation
Eat'n Park Hospitality Group, Inc.
Grable Foundation
Iris Technologies, Inc.
Pittsburgh Logistics
PPG Industries Foundation

PATRIOTS CLUB

GIFTS OF \$25,000-\$49,999

Anonymous
Barnes & Noble College Booksellers
Coca-Cola Enterprises
Margaret W. Duffy '51
Joseph W. '70 & Judith Nocito
Alvin & Ann Rogal
James A. Rudolph & Family
Snee-Reinhardt Charitable Foundation
Linda & Mel '62 Teetz
Vira I. Heinz Endowment

COLONIAL PARTNERS

GIFTS OF \$10,000-\$24,999

Colin Bailey
Dolores Ombres Bassett
Comcast
Charles L. Cost
Highmark Blue Cross Blue Shield
Hilb Rogal & Hobbs
The Hillman Company
Michael Baker Corporation
Edward A. Nicholson, Ph.D.
Pennsylvania Humanities Council
Pittsburgh Steelers Sports, Inc.
PNC Financial Services Group
David M. Roderick '50
Roy F. Johns, Jr. Family Foundation
Rande Somma '73
Gregory R. & Janet O. Spencer
Tippins Foundation

INDEPENDENCE SOCIETY

GIFTS OF \$5,000-\$9,999

Alpern Rosenthal
Bayer Corporation
Jeffrey & Sheryl Broadhurst
Gregory & Polly Dell'Omo
David E. Dick '70
Equitable Resources Foundation
Ernst & Young LLP
Ferry Electric Company
Gateway Financial Group, Inc.
Richard J. '78 & Scheryl C. Harshman
John G. M'96 D'02 & Janice Inman
D. Michael Jamison M'95
L. Robert Kimball & Associates, Inc.
Loralee & Raymond LeBoeuf
Daniel B. '82 & Lori Long
Samuel J. Mastovich '95 M'98
Mr. and Mrs. Gerd D. Mueller

Morgan K. '82 M'85 &
Kathleen M. '81 O'Brien
Preston Toyota
Bob & Jan Rogers
Tom '75 M'87, Tommy & Heather Ryan
SECORO Foundation/Sewickley
Savings Bank
Sky Financial Group
Mr. & Mrs. W. Keith Smith
Robert W. '75 & Rhonda L. '84 Stasik
Tate-Jones, Inc.
United States Steel Corporation
Thomas K. & Margaret Whitford

RMU SOCIETY

GIFTS OF \$1,000-\$4,999

Anonymous
#1 Cochran Megacentar
A.C. Dellovade, Inc.
Allegheny Financial Group, Ltd.
The American Ireland Fund
Dr. Leonard Asimow
Babst, Calland, Clements & Zomnir P.C.
Michael C. Barbarita '72
Barton Denmarsh Esteban, Inc.
George M. Beidler '74
Bet-Tech International
Ralph Bincarowsky '71
Black Box Corporation
Paul Edward Block M'87
Brentwood Bank
John E. Brown '75
Robert D. Brown '71
Timothy L. '73 & Laurie E. '72 Brugger
Marianne '95 M'99 &
David E. '95 M'98 Budziszewski
Frank & Barbara Burdine
Catherine A. '77 M'87 &
Alan J. '77 Caponi
CentiMark Corporation
Gary R. '74 & JoAnn '73 Claus
Michele T. Cole
Robert '77 & Donna Connolly
Drs. Rex & Daria Crawley
Karen B. Crenshaw
Crowne Plaza
Curtiss-Wright Electro-Mechanical
Corporation
Cushman & Wakefield, Inc.
Thomas R. Dapra '77
Lynda J. Davidson & Scott E. Branvold
Cynthia '66 & Edward J. DeBartolo
DeBartolo Property Group, LLC
Dieter Home Construction, Inc.
Emanuel V. '77 &
Carla M. '78 M'02 DiNatale
Dofasco Tubular Products
Dominion Foundation
Duquesne Light Holdings, Inc.
Lee F. Eberly '68
Beverlynn & Steven Elliott
The Ellis School
Winston & Christine Erevelles
Mark R. Exler '88
Pete & Theresa Faix
Dr. & Mrs. Neal J. Fanelli
Field Turf
Drs. Seth & Olja Finn
Dr. Frank R. Flanegin
Stephen & Jennifer Foreman
Donald P. Fusilli, Jr.
Ruth '78 & Alan Garfinkel
Dr. & Mrs. Caesar A. Garofoli
Paul D. '87 & Michelle L. '89 Gedeon
Harvey N. & Wendy A. Gillis
Karen L. M'98 & Louis Goodman
John & Luz Graham
Graziano Construction
Greater Pittsburgh Chamber of Commerce
Greater Pittsburgh Physical Therapy
Jeffery K. & Gerry L. Guiler
H.J. Heinz Company
Dale Harrison '71
Dr. Oliver W. Hayes
John C. & Delene A. Hayward
Hefren-Tillotson, Inc.
Heritage Valley Health System
Lee Hofacre
Mr. & Mrs. Ronald R. Hoffman
Charles I. & Nancy Homan
Thomas A. Hunley '84
Wayne F. Hunnell '75
Derya A. & Gary J. Jacobs
David L. Jamison, J.D.
Rose Marie Johnston
Larry Karnoff
Dr. & Mrs. Bill Katip
Nancy L. DiRenno Kelly '72
Dan & Mary Lou Kiener
Stephen W. Klemash '82
Klett Rooney Lieber & Schorling
L.D. Astorino & Associates
David J. Lancia '79 M'86
Helen D. & Dennis A. '71 Lemmon
G. James & Carol Leone

Jeff & Joanna Listwak
 Littler Mendelson Foundation, Inc.
 Littler Mendelson, P.C.
 L. Robert Kimball & Associates, Inc.
 John E. Lynchski Esq.
 Douglas J. Lynn '93
 David R. Majka & Constance L. Eads
 David & Nancy Malone
 L. Thomas M'80 &
 Judith Breedlove M'87 Marchlen
 Marsh USA Inc.
 Marshall Ruscetti Foundation
 Joan Massella
 Nicole McEwen
 Barbara & William McNees
 The Medicine Shoppe
 Mellon Financial Corporation
 Norman F. Mitry '74
 Frank A. '72 & Gayle M. Molinero
 Dan & Colleen Murphy
 William R. Newlin
 Ohio Valley General Hospital
 Oxford Development Company
 Mark S. Pallone '82
 Penn Telecom Inc.
 Katherine Perozzi
 Peter Pezzin
 Alan J. '71 & Ruth Porsch
 PricewaterhouseCoopers LLP
 Kevin P. Prykull M'82
 Ann C. Cibulas Puskaric M'81
 R. C. Stenger Trust
 Robert G. Radermacher '80
 Mary D. Ravita
 Edward H. Roeber '65
 Perry F. Roofner
 Rotary Club of Moon Township
 Denis P. Rudd
 Gene & Linda Salvatore
 Theresa L. Scheetz
 Willy & Sarah Scherf
 Marcia K. '77 & Mark M. Sherwin
 Thomas R. Shook '50
 Catherine A. & Thomas C. M'06 Skena
 Tom & Jayne Sterling
 Robert V. Stovash '61
 Dr. David P. Synowka
 Steven P. & Betsy S. Tassaró
 Tax Transfer Corporation of New Jersey
 Patricia A. Thompson '95
 Kimberly Tillotson Fleming
 Sandra R. Tomlinson '78
 United Way of Allegheny County
 Dr. Gloria M. Walton & Aaron D. Walton
 Ellen G. Wieckowski
 Jeffrey A. Wlahofsky '83
 Sidney & Ellen B. Zonn

EXECUTIVE CABINET

GIFTS OF \$500-\$999

Richard A. Alberti '79
 Black, Bashor & Porsch
 Kevin P. M'04 & Fay K. M'00 Boland
 Keith Boyd
 Lawrence R. Boyd '30
 Dr. William G. & Anne L. Brucker
 Mrs. Elizabeth M. Caine
 Catherine Graves Foundation
 Craig S. Coleman
 John A. Consigliero '55
 Richard J. Forster '72
 Ronald W. Frisch '71
 Richard F. Galardini
 Roger & Emilie Gillan
 Thomas P. Gordon
 Timothy J. Hammer '83
 Stephan E. Harvey
 Cathy L. Hester '88 M'90
 Renee James
 Dennis & Sissy Jochmann
 Linda J. Kavanaugh, Ph.D.
 Carrie Kuntz
 Kellie L. M'97 & Kevin Laurenzi
 Allen R. Lias
 Carol S. M'88 & Douglas J. '74 MacPhail
 Main Steel Polishing
 Mark M. Maxwell
 Patrick J. McCann '78
 Francenia M. & Albert S. Merritt
 Denise A. '88 & Brian Murray
 David Oschman
 Paul & Peggy Outon
 Brad & Charlene Pendell
 James E. Rebele, Ph.D.
 Ralph R. Reiland
 Brian '91 & Elizabeth Della Penna '90 Rizor
 Karl J. Skutski
 Society of Actuaries
 Janice M. Stovash '84
 Darcy B. & Norman B. '75 M'89 Tannehill
 Vince & Giannina Treonze
 John & Jeanne Turcek
 Vanguard Charitable Endowment Program
 Linda A. Betz Woshner '84
 Stu Young
 Jacqueline H. Zavarella '86
 Charles W. Zimmerman

HERITAGE BENEFACTORS

GIFTS OF \$300-\$499

AAA West Penn/West Virginia
 Gregory D. Ambrose '96
 Chuck & Jill Brodbeck
 Dale Brown

Cambridge Speakers Series
 Jeffrey A. Casey '79
 Donna L. '79 M'81 &
 Joseph A. '81 M'97 Cellante
 Coldwell Banker
 Beth Corbelli-Ryan
 Joseph S. D'Amico '86
 Joseph P. Davoren '71
 Guyton J. Diana M'95 M'01
 Carl R. Dudeck '81
 Lyle E. & Janet L. Farison
 Terry E. Farlik
 Stephen M. '81 &
 Nancy J. '80 M'91 Ferber
 Lewis J. Fernandez '74
 Rick Frankford
 Lynn George
 Mary C. Gerard M'05
 David G. Hammer '83
 David A. Harding '98
 Adora D. Holstein
 JDBA Architects
 Jewish Healthcare Foundation
 William L. '49 & Shirley Jones
 Jill M. Krieger '89
 LevelTek Processing LLC
 Richard L. Lopez '79
 Marriott - Airport
 Mr. & Mrs. Thomas A. Marshall II
 Christine A. McAfee '96
 Doris L. McCardle '63
 Janet '96 & Walt '57 McGervey
 Karen L. Mickus '91
 Robert H. Minsterman '85
 Kenneth Moore M'98
 National City Bank of PA
 Rochelle Oaks
 Paradigm Development International, LLC
 PBS & J
 Pittsburgh Airport Area Chamber
 of Commerce
 Steven L. Place '78
 Eric M. Pond '99
 William J. Recker '76
 Bonnie C. Reed '66
 Mr. & Mrs. Daniel R. Rota
 Janet Schneider '72
 Neal Silliman
 Ulisa Six
 Robert K. Stranczek '87
 Maria D. Stromple M'95
 Tyler Mountain Spring Water, Inc.
 U Cann Benefit
 United Steel Service
 Albert J. M'86 & Pamela A. Vernacchio
 Luanne '85 & James A. '81 Vitale
 Mr. & Mrs. Joseph F. Walton

The Westin Convention Center Pittsburgh
 Dan & Kathleen Wise
 Judy L. Worthington '02
 Fred C. Young
 John A. & Beth Zeanchock

ROBERT MORRIS ASSOCIATES

GIFTS OF \$100-\$299

James R. Aigner '87
 Allegheny County
 Alix H. Alton
 Thomasine I. Alvarez '61
 Patricia K. Alwine '70
 Kevin P. Amos '88
 George A. Anderson '74
 Thomas L. Anderson
 John Angiotti
 William J. Applegate M'05
 James C. '92 & Claudia M. M'04 Armani
 Joseph G. '93 & Linda T. M'93 Arnone
 Clarence Bacher '61
 Anna Baird '77
 J. Michael Baker '91
 Lisa A. Balenciaga '91
 Barbara A. Banosky '60
 James A. Bartkowiak '83
 John F. Baycura '81
 Leonard C. Baych '71
 Donald D. Bechtold '75
 Charles C. Beck '67
 Simon A. Beck '85
 John G. Beering '73
 Mr. John A. Beighel
 Suzanne Bell
 Wendy J. Bennett M'91
 Blackwood Financial Planning, Inc.
 Frank A. Blum '71
 Kerry A. Bowser '92
 Joseph M. Boyer '82
 John J. Boyle '83
 Conrad E. Bricker '86
 Robert L. Britt '51
 John C. Brown M'96
 Raymond H. Brown '80
 Nicholas & Rosemarie Bruich
 Helen J. Bruzzese '90
 Lois D. Bryan M'00
 Joseph Bubas '75
 John L. Bucci '73
 Ralph R. Burchell '88 M'98
 Marlene E. Burks M'04
 Mary Burnham M'84
 Sharon A. Burnheimer '82
 Clay E. Buzzard '50
 Kathryn A. Campbell '90
 Bonnie L. Carmack '76

HONOR ROLL OF DONORS 2005 | 2006

John Stanton Carson, Jr.
 Jeff & Barb Carter
 Renee T. Cavalovitch '01
 Center for Colon & Rectal Surgery
 Joseph D. Cerchiara '87
 Chatham College
 John & Elaine Chermak
 James A. Cichra
 Charlotte A. Claypool '74
 Joseph A. Conte '88
 Sue E. Conterno '74
 David M. Copper '77
 Helen J. Corsetti '42
 Patricia A. Cotter '93 M'98
 Theodore D. Cox '87
 Constance B. Cragan '69
 Andrew D. Cramer '00
 Andrew B. Crofoot '92
 Robert '84 & Diane Weigand '86 Cronin
 Susan M. Cuffin '96
 Marie C. Davidson
 Sean M. Delaney
 Paul D. DeLellis '86
 Kathryn Dennick-Brecht
 Robert C. Denove
 Ed DeRose
 Bernard A. Deverson '71
 Christopher Devine
 Linda Dexter
 Elizabeth B. Dickey
 Mr. Dwight Dietrich
 Joshua A. DiFlorio M'00
 Donald C. Diklich '80
 Joseph W. Dill
 Joann E. Dinkel-Holzer '90
 Katherine I. Dobbs '02
 Eugene M. Dombrowski '86
 H. W. Doring '77
 Downingtown Family Medicine
 Duquesne University
 James R. Eckbreth
 Robert L. Eckbreth '61
 Dorothy S. Eisenberg '82
 Mark S. Elek '82
 Arlene Embry '95 M'97
 Thomas & Gretchen Endres
 Robert F. Ewing '72
 Vincent J. Faga '73
 Carol S. Fassinger '94 M'98
 Kristina A. Fausti '97
 Michael Feeney
 Marco L. Ferrin '95
 Robert O. Finley '87
 Daniel M. Fitzpatrick '86
 John E. Flynn '67
 John Jay Flynn '78 M'83
 Lookman B. Folami '85
 James R. Foutz '70
 Paul C. Franklin
 Diana L. Froats '82
 Jeff Froehlich '89
 Frances A. Frye '60
 Jacqueline A. Funt '02
 Mrs. Lois B. Gaffney
 Sally A. Gaitens '81
 Audrey & James Galosi
 Martin P. & Maria Galosi
 Ken Gargaro
 John J. Gazdacko M'83
 Raymond F. Gensler '80
 Joseph J. Gery M'88
 Ann Getkin M'04
 Mary Jo Geyer '95 M'98
 Helen M. Gibson '91
 Jill R. Gifford '02
 Scott R. Gill '85
 Bruce Glick
 John J. Gould '79
 Cynthia L. Grese '94 M'96
 Debra Gresh
 John E. Gress '89
 Christine Mariani Griffith '68
 Marjorie Griffith '54
 Joshua L. Grill '00
 Rose Mary R. Gross
 William & Romaine Gunion
 Mary Kay Hamilton '91
 Shawn P. Hanlon M'00
 Raymond G. Hanobik '61
 James E. Haram '74
 Jeffrey S. Hard '84
 Duane M. '95 & Dana C. '95 Hardek
 Lauren J. Harden-Frost '92
 Robert J. Harding '73
 Edward W. & Karen Byrnes '85 Harmon
 Barbara & Robert Harper
 Louis D. Harris
 Amon K. Harrod '00 M'04
 David A. M'99 & Denise A. '01 Hartley
 Harry W. Harvey '48
 Denise Hebb M'03
 Kristen L. Heinlein '95
 Col. Jeffrey F. Hemler
 Glenn '72 & Susan Henicle
 Linda M. Herbert
 John Hern '51
 Rodney A. '93 M'96 & Adina Lee '97 Herrmann
 Paul A. Herskovitz '97
 David J. & Sandra Hess
 Carole J. Hoag '71
 Cara A. Hoehn M'02
 David C. '75 & Elizabeth Homer
 Cynthia Hoover '69
 Victoria L. Hoover M'95
 William K. Hosni '84
 Michelle G. Hough D'02
 Brian C. & Diane L. Howard
 Laura M. Hoy '92
 Larry J. Hufnagel '82
 Jed Hughes
 Robert F. Hunter '75
 William B. Hutchens '49
 Anne K. Irvine '81
 Karen D. Jankowski '78
 James M. Jasek '84
 Marilyn M. Jenkins M'97
 Cindy '85 & David Jennings
 Kathi M. Jobkar '84 M'99
 Michele M. Johns '79
 Dennis J. Johnson
 Edward B. Johnson '89
 Sandra M. Jolly '78
 Cathleen S. Jones
 Diana M. Jones '92
 Elizabeth Jones
 Dr. Maria V. Kalevitch
 Beverly R. Karwoski '84
 Scott R. M'00 & Maureen H. Keefer
 Thomas W. Keeler M'88
 Dr. & Mrs. William A. Kelly
 Philip H. Kerr '75
 Frank E. Kight '71
 Wayne E. Kingsland '86
 Benjamin Kirschenbaum
 Harriet Kirschenbaum
 Roger Kirschenbaum
 Lance K. Kledas '81
 George W. Knox M'04
 David M. Kopp '91
 Mark J. Koss '80
 Michael A. Kovacs '52
 Scott M. Kovaloski '85
 Nichole L. Kraynick '99 M'05
 Pauline '78 & Charles A. '79 Kunz
 Wayne P. Kurtz '89
 Kristin A. Laboda M'04
 John J. Labos '74
 Michael D. Lacey '74
 Bruce R. Lang '81
 Charles A. Lang M91
 Kevin J. Larkin '77
 Kenneth A. Lasota '92 M'99 M'03
 Christine Laurent '96
 Walter James Lee III '75
 Charles H. Leyh M'88
 Ralph H. Liberatore '63
 Darlene A. Lipovsek '94 M'96
 Robert John Locke '03
 Eugene C. Lodovico '61
 Robert S. Lofquist '71
 Ralph G. Longo
 Andy Lopez
 Ronald B. Loshelder '80
 Dennis J. Loughran M'97
 Norman C. Lyon, Jr. '99
 Stephenie C. Lyon M'90
 Randall L. Lyscik '75
 Frank J. Macchiarola
 Marcia Malcolm '67
 Aaron G. Malignani '93
 Bill Malinchak
 Dean R. Manna, Ph.D.
 Deborah E. Marby '73
 Becky Z. Marsh '99
 William J. Martin '89 M'91
 Terri L. Marts M'85 D'02
 Deborah McBride '80
 Robert K. McCartt '79
 Lois J. McCloskey '55
 Matthew G. '88 & Dana J. '86 McConaghy
 Janet A. McConnell
 Robert W. McCutcheon '91
 Arnold P. McIlwain '67
 Veronica L. McIntyre '86
 Hugh D. McJunkin '74
 Mark S. McLaughlin '87
 Jayne E. Mellon '81
 Michael G. Melvin '83
 Nancy J. Mendelson '84
 Charlotte A. Mentzer '78
 Dale L. Mertz M'80
 Robert & Beth Meyer
 John & Julianne M. M'02 Michalenko
 Donald Migliore '73
 Daniel L. Miley '81
 Carol L. Miller '88
 Mr. & Mrs. W. Scott Milligan
 William G. Milliron
 Edward C. Miner '63
 Robert J. Moineau '49
 Moon Township Giant Eagle
 Brenda C. Morabito '61
 George W. Morgan
 David '00 M'01 & Devora E. M'01 Moriarty
 Dr. & Mrs. Joseph M. Moricz
 Gregory E. Morrow '82
 Mt. Lebanon Awning & Tent Company
 Joan E. Munion '84
 Adelia A. Muti
 Cheryl A. Myers '85
 Kirsten K. Nelson '98
 Wendy L. Whitaker Nesbitt '89
 Lisa M. Newman M'93

Victor A. Nicholas '52
 Lawrence J. Nicolette M'95
 Thomas A. Niederberger M'84
 Diane L. Niermeyer '68
 Eleanor H. Nimick
 Kandi D. Norvell '98
 Maureen Noyes '84
 Karen M. Nugent '75
 NVR
 Cassandra Lee Oden
 Catherine E. Oehl '96
 Nancy Campbell '59 & Patrick J. O'Farrell
 John Olsavsky M'82
 Yildirim & Ferda Omurtag
 Marianne R. Pack '78
 David G. Parada '91
 Thomas B. Parrish '75
 Eric C. Paul '94
 Shari Payne M'00
 Dewitt M. Peart '81
 Rona L. Peckich '83
 Sean M. Petrisko '81
 Anthony J. Petrocelli '77
 Tamara A. Petronka M'86
 Bruce Phillips
 Katherine M. Phillips
 Jon G. Pidich M'86
 Cynthia C. Plattner '97
 Ronald J. Points '64
 Marian Schaffer Pond M'87
 George D. Porter '57
 Richard C. '72 & Carole L. Porter
 Pamela Post '89
 David L. Praster '90
 Joseph P. Priselac '72
 William A. Pujia '70
 Leonard J. Pukanic '78
 Quaker Valley Rotary
 Clarence B. Randall '50
 John J. Rech '69
 Michael A. Renzelman '86
 Tam E. Revtai '79
 Dru P. Rezzetano '82
 Jacqueline K. Rizzo '95
 Neil F. Robinson
 Richard Rocereto
 James C. Roddey
 Anthony F. Rodi '99 M'01
 Gerald E. Rogers '81
 Mark W. Rogers '76
 Amy S. Romantine '94
 Leonard R. Rosky '71
 Dan Rossi M'04
 Christopher E. Ruscitti '04
 Peggy B. Ryan '68
 Ryno Production, Inc.

S & R Snodgrass
 Corny Salvaterra
 Carolyn P. Samolovitch '00
 Alfred J. Santoro '73
 James '83 M'86 &
 Karla M. '85 M'87 Sartori
 Edward A. Savarno '57
 Marie-Noelle A. Sayan '81
 William E. Schafers '89
 Wendy S. Scheller '83
 Steven J. Schmitt '86
 Schneider Downs & Co., Inc.
 Herbert L. Schreiber '70
 Antonio Sciulli
 Karen A. Sciuillo '88 M'05
 Louise A. Scott '02
 George W. & Beverly M'87 Semich
 Constance P. Serapiglia '99 M'01
 Seton Hill University
 Mr. & Mrs. Harry Shane
 Jon & Sandy Shank
 Charles & Debra Sharrocks
 Michael G. Shevchik '31
 Bradley K. Shoff '87
 Mark D. Shook M'95
 Richard C. Showrank
 Linda B. Shrader '74
 Norann K. Shuey '95
 Gerald R. Shuster
 G. Scott Simms '95
 Janine R. Skariot-Ware '85
 Howard Slaughter, Jr.
 Donald K. Smith M'89
 Patrice T. Smith M'04
 Steven R. Snyder '73
 Solution Specialists, Inc.
 Robert A. Soroker M'89
 Margaret M. '91 & Andrew J. Span
 The Speakman Financial Group
 Joel N. Stafford '87
 Jaimie N. Stern '03
 Richard W. Stern '76
 Nanette M. Stevens '81
 Frank W. Stickel M'83
 Margaret A. Stiles '47
 Thomas J. Stoessel '83
 Jerry Stone
 Mary Ann Stoops '01 M'04
 Jan E. Stork '81
 David E. '94 & Stephanie Suhayda
 Ann E. '82 & Scott R. Sullivan
 Mary T. Sungala
 Roberta L. Suwak '80
 Kathleen A. Swan '79
 Louis B. Swartz
 Kenneth C. Syrko '74

Alan D. Talley '82
 Carol M. Tambellini '83
 Howard L. Taylor '80
 Stephanie N. Thompson '98
 Sheila L. Todaro
 Attorney Todd
 Paul F. Tracy '81
 Bob Trax
 Trinity Oaks, Inc.
 David J. Trueman '71
 George Tsounos '53
 Jonathan A. Turchek '01 M'05
 U.S. Sports Video
 UBS
 Hope R. Vaccaro '97
 Emil J. Veal '95
 David A. Velegol M'96
 Christine Vesely-Shaffer M'95
 Joseph J. Vitullo M'86
 Dang Q. Vo M'03
 Janice Vucic '84
 Bruce Wallace
 Kenneth R. Watkiss '55
 Patricia L. Watso '59
 Scott Weaver
 William H. Weigold '73
 Dennis M. Weinzierl
 Dr. Heather Weir
 Allan D. Weisel '78
 Margaret Wellons '84
 Melanie M. Welsh '99
 Peter D. Welsh '77
 Susan M. Wesolowski '01
 Pierre R. Wheaton '00
 Raymond R. Wojszynski '80
 Shirley Wolinsky '76
 WPXI
 Jeffrey A. Yoder M'04
 Michael P. Yurosko '83 M'01
 Joseph Zuback
 Daryl J. Zupan M'83
 Patricia & Tony Zusinas

**DONORS
 GIFTS OF UP TO \$99**

Kathleen A. Abbott '87
 Lyle Andrew Abbott M'98
 Renee L. Abrams '66
 Brian D. Ackerman '92 M'97
 Lee A. Ackerman '88
 Patricia A. Acon '95
 Patrick M. Adair '03
 William D. Adamiak
 Daniel W. Adams M'99
 Darlene E. Adams '66
 Curt D. Aftanas '05

Marcia & Roger Agnelly
 Martha S. Agnew '74
 Ray Ahrenholtz '81
 Joseph F. Aiken '87
 Christopher M. Albert '94
 Stanley F. '62 & Jeanne M. '80 Albright
 Pamela Aleck
 Rosalie M. Alfonsi '49
 John V. Alioto '76
 Jennifer L. Allison '98
 Martin L. Almade '83
 Robert A. Aloe '86
 Amy Aloï
 Michael D. Alston '98 M'02
 Michael Altman
 Jason A. Altschiller '97
 Susan M. Alvarez '83
 Harry J. Alverson '38
 Kevin Alverson
 Bernard J. Ambrose '41
 Jill E. Ammon '95
 George A. Amrhein '82
 Diane L. Amsler M'87
 Carol Anden '55
 Tiffany Anders '03
 Bethany K. Anderson '05
 Thomas E. Anderson '71
 Christy A. Andromalos '02
 William J. Androustopoulos '92
 John Angiulli '83
 Linda L. Ankers '87
 Cindi L. Ankney '89
 Mae E. Antesberger '93
 Bernard F. Antol '55
 Kasey A. Antol '04
 Scott A. '89 & Cheryl '94 Antoline
 Mark J. Apone '06
 Lucy A. Aquilante '78
 Richard E. '83 & Lynn K. '83 Archer
 Clare M. Arena '99
 Linda S. Arlet '02
 John A. Armstrong '85
 Douglas P. Arndt '91
 Chris O. Arnold '94
 Phyllis J. Arnold '77
 Malvene M. Arvay '65
 William T. Astorino '70
 Thomas A. Aubel M'99
 Robert L. Aughenbaugh '70
 Gladys C. Auld '38
 Dolores Aulthouse '50
 Paul F. Austin M'85
 Robert R. Austin '56
 Brian E. Babyak '88
 Ronald Bacco '71
 Lisa M. Bacher '06

HONOR ROLL OF DONORS 2005 | 2006

Lynn E. Bacon '73
 R. E. Badstibner '83
 Lawrence A. Bailis '66
 Patrecia C. Baily '62
 Victoria J. Baily '74
 James D. '95 & Jennifer A. '95 Baker
 Linda M. Baker '79
 Susan M. Balazik '66
 Susan J. Baldt '79
 Jill M. Balik '78
 Brian J. Balint '02
 Arthur E. Ball '63
 Leroy M. Ball M'97
 Lori L. Ball '94
 Romaine K. Balog M'87
 Patricia M. Balok '59
 Rachael E. Ban '05
 Judith A. Bane M'95
 Mishelle R. Banfield '02 M'06
 Harry L. Banks '01
 Vivek R. Bapat M'98
 Craig M. Barch '91 M'00
 M. R. Barclay '60
 James M. Bargerstock '02 M'02 M'04
 Jeffrey E. Barker '93
 Mary Jane Barker '42
 Brenda F. Barnes '96 M'99
 Laura E. Barnes '02
 Susan Barnes-Camp '81
 Kylee M. Barnhart '06
 Mary Kay Barnhart '66
 John P. Baron M'05
 Samuel A. Barr '03
 Arthur E. Barrett
 Bernadette M. Barrett '66
 Gary Douglas Barrett '99
 Jeff P. Barrett '04 M'05
 Kimberly L. Barrett '06
 ReShelle L. Barrett '91
 Robert A. Barrick, Jr. '00
 Susan M. Barron '92
 John A. Barsic M'83
 Elaine M. Bartko '73
 Paul J. Bartmas '93
 Catherine N. Barton '90
 Clifford A. Barton '48
 Ronald L. Bartosh, Jr. '01
 Amy J. Bathie '86
 James A. '79 & Patty J. '80 Bauccio
 Julie Bauer '83
 Diana M. Bauerle '02 M'05
 Louis A. Baverso M'03
 Josephine V. '89 & William R. '88 Baxter
 Ronald R. '93 & Nancy J. '71 Bayne
 Kevin J. Bazner '06
 Richard P. Beard M'01
 Claudine M. Beatty '90
 Lara F. Beer '01
 Steven J. Begg '95
 Jamie L. Beglinger '06
 Diann C. Behrens '78
 Richard C. Beinhauer
 Thomas R. Beitzl M'89
 David C. Beitle '65
 William F. Belajac M'98
 Jessica R. Beley '06
 Jeffrey J. '86 & Maureen E. '86 Belich
 Jennifer I. Bell M'97
 Nathan C. Bell '02
 Stephen M. '97 & Tina M. '97 Bell
 Susan M. Bell M'99
 Marie E. Bellis '94
 Robin L. Belsterling '91
 Jeffrey Beltz M'98
 Gary J. Bench M'90
 Robert R. Bender '91
 Frances M. Benko '86
 Doreen A. Berger '65
 Jaime B. Bergstedt '03
 Wade R. Berkey '03
 Gregory M. '71 & Kathleen M '70 Bermosk
 Maria T. Bernardo-Brady '87
 Lisa J. Bernett M'93
 Joseph C. '71 & April Berni
 Rebecca H. Berquist '78
 Lori S. Bertani '91
 Virginia A. Berteotti '70
 Anna Bianco '74
 Margaret K. Bickerton '37
 Carrie D. Biddle '91
 Scott A. Biddle M'95
 John S. Bielewicz '06
 Kristie L. Bielewicz M'00
 Nancy R. Bierman '56
 Peter C. Biggs '05
 Lori C. Biglow '86
 David W. Billheimer '67
 Stephen F. '48 & Agnes Billisits
 Donna P. Bindyke '75
 Elizabeth J. Bingham '68
 Tamaira L. Binion '05
 Carmen J. Biondo M'84
 Rayne J. Bird '79
 Dennis C. Bishop '89
 Dorothy L. Bishop '77
 Penny N. '67 & Robert J. '67 Bitner
 Edward J. Bittner M'98
 Jayne N. Bittner '88
 Heather J. Black '87
 Pamela Black M'06
 Maria C. Blair '84
 Joseph C. Blankenship '92 D'04
 Robert J. Blem M'02
 Stephanie Bloom M'06
 Paul M. Blose '84
 Jodi L. Blubaugh '04
 Martin J. Blum '00
 Gary J. Bobeck '93
 Marie H. Bocchicchio-Mulraney '81 &
 Henry J. Mulraney '80
 Ari Bodnar '81
 William M. Bodnar M'93
 James E. Boehm '91
 Roger A. Boehm '91
 Jeanine M. Bogdan '95
 Kimberly D. Boggs '06
 Richard G. Bogovich M'86
 Jai Bokey M'02
 Brian R. Bokor '00
 Tonya Bollman M'99
 Joan Bombich '81 M'86
 Susan L. Bommer '77
 Kimberley A. Bonacci '02
 Armando Bonanotte '74
 Michael F. Bondi '84
 Charles H. Booth '51
 Steve G. Booth '89
 Edward A. Boozel '71
 Charlene L. Bopp '65
 Donna M. Borgese M'98
 Kathleen A. Borgese '86
 Christina L. Bornemann '01
 Colleen M. Bosko '06
 Sheena Boulding
 Diane T. Bowden '88
 Robert A. Bowell '82
 Susan M. Bower '74
 Bowers, Ross & Fawcett, LLC
 Jeffrey R. Bowser '02
 Raymond C. Bowser '50
 Mark A. Boyce '05
 Dennis Brace '70
 Allen C. Bradford '75
 Rosemary S. Bradley '67
 Jaime R. Brahler '00
 David A. '80 & Martha A. '82 Brahm
 Marie L. Brajdic '91
 Deborah L. Brandstetter '95
 Laurie L. Brandstetter '88
 Mary A. Brangan '84
 Deborah L. Brannan '92
 Tamela J. Brant '83
 Chris S. Branvold '05
 Michael D. Bratetic '75
 James E. '71 & Ellen G. '69 Brehove
 Kimberly Brennan '78
 Kimberly S. Brennan '97
 Amanda D. Brewer '04
 Lorraine Brewer '98
 Nathan A. Brewer '02 M'02
 Debra J. Brewster '76
 Eugene F. Brieck '72
 Jane A. Brindle '64
 Mitzi J. Brinkman '92
 Jay F. Broadbent '92
 Arthur D. Broadwick '90
 Angel M. Brock-Murphy '02
 Rori A. Broggi M'02
 Howard W. Brokenbek '78 M'85
 Bronder & Company, P.C.
 Craig A. Browell '73
 Brown & Abbott
 Carli A. Brown '06
 Christian T. Brown '92
 Gregory A. Brown '74
 Herbert E. Brown
 Michael C. Brown '00
 William M. Brown '87
 Kristy L. Broze '06
 John & Wendy Bruchwalski
 Angelo A. Bruno '55
 Ricco C. Brusco
 Edith M. Bryen '43
 Joan Brzana '81
 David D. Brzozowski '82
 Bernadine A. Bubash '58
 Donald J. Bucholtz '65
 Laura S. Buck, PHR M'00
 Lois E. Buckingham '48
 Nancy E. Buechel '66
 Carol J. Bugher '75
 Jerri W. Bullock '81
 Mary Beth Bumer '67
 Gerald F. Bunda M'85
 Christine Bungo '96
 Robert A. Burich '73
 Sharl A. Burk '74
 Janet M. Burke '81
 Gina B. Burkett '84
 Sandy M. Burns '87 M'97
 Lewis J. Butina '93
 Raymond C. Butter '05
 James Buzek
 Armand A. Buzzelli Jr.
 Armand A. '79 &
 Mary M. '80 M'88 Buzzelli
 Kali L. Byers '06
 Kathryn E. Byers '78
 Tiffany J. Byrne M'06
 Gildina DiPrinzio Cabrera '90
 Ronald Cadez
 Nichole M. Cain '05
 Andrea Calcagno M'95
 Amanda E. Calik '02

Lauren B. Callaghan '80	Angela Ciocca '63	Dorothy W. Cowan '58	John R. DeChellis '92 M'98
Nancy M. Callan M'89	Richard A. Ciorra '90	Ruth E. Cox '80	Barbara J. Deem '81 M'90
Rachel K. Calvin '05	Joyce A. Cipollone '73	Gale K. Crawford '91	Paul J. Deemer '72
Douglas E. Cameron	Craig A. '99 & Virginia S. '98 Cipriani	Linda D. Crescini '78	Frank A. DeGrano '72
Carol A. Campbell '73	Peter W. Clakeley M'92	Nichole D. Crew '00	Ronald V. Deiger '96
Heather M. Campbell '98 M'99	Carol D. Clapham '67	Jeanne V. Crichlow '88	Susan A. Deitrick '90
Marian J. Campbell '97	Stephanie L. Clark '85	Charlotte Critchlow '37	Lauren A. Delahanty '06
Ettor A. Canestraro, Jr. '01	Jill D. Clary-Rowe '00 M'04	Audrey V. Croley	Philip K. Della Valle '81
Mrs. Anne M. Canny	Jeremiah Claypool	Vera F. Crookshank '50	Gerald Delon '93
Frances J. Caplan	Harry L. Clayton	L. Kathleen Cross '66	James M. DeLong M'94
Victor W. Capozzolo '89	John R. Clements '00	Lauren J. Crossley '99	Kathleen A. Deloplainé '02
William J. Caridi '48	Christine B. Clew '89	Carole A. Crouse '61	David W. DeLuca M'85
Richard F. Carlson '84	Donna J. Clugston '82	Alan L. Crowell '69	Joan DeMarino '65
Scott A. Carlson '82	Justin E. Coffee M'04	Mary C. Crowley '79	Thomas T. Demas '64
Judy & John Carnaghi	John W. Colavincenzo	CTR Systems, Inc.	Deborah A. Demharter '69
Margaret Fry Carney '78	Elaine M. Cole '04	Betty D. Culley '99	Jennifer Dempsey
Edward M. Carnvale	Paul W. Collier '99 M'01	Brian K. Cumberledge '95	Patricia Dempsey
Lori A. Carnvale '96	Meghan L. Collins '06	Steven W. Cummings '81 M'94	Judith A. Denham '88
Patricia J. Hall Carothers '71	Robert M. Collins M'95	Robert J. Cunningham '91	Clifford F. Denholm '01 M'01
Daniel M. Carr '82	Mindy L. Columbus '02	Joseph J. Curnarski '75	Cynthia L. Denner '06
Daniel M. Carr, Jr. '03	Karen A. Colussi '05	Kathy Curran M'06	Ryan F. Deporzio '06
Harry M. Carr '80	Madeline N. Colvin '63	Michael D. Curran '76	Mary M. Derby '80
Patrick B. Carr '93	Jennifer R. Colwell	George B. Daetz '70	Linda J. DeRiggi '73
Kathryn J. Carrier '53	Carol J. Concelman M'99	Louis Dagostino M'02	Darryl R. Derosa '90
Wayne A. Carringer '00	Doug Conley	Andrew S. Dakan '04 M'05	Reid Derunk '71
Andrea S. Carroll '66	Catherine A. Connell '55	Michael D. Daley '93	Christopher P. DeSantis M'00
J. M. Carroll '80	Mrs. Deborah Connell	Domenic A. Dallimonti '48	Cynthia Desch
Carlos T. Carter M'00	Nicole C. Connell '04	Diane A. Dallos '06	Michael E. '71 & Carol A. '70 DeSimone
Darlene R. Carter '82	Anna M. Connelly '39	Dale C. Daman '79	Jerry Destefano
Patrick J. '93 & Karen A. '92 M'02 Carter	Christine Connelly '94	Tammy Daman-Sheets '87	Ronald J. Destro, CPA M'03
Vadim S. Carter '00	Christopher M. Connor '99	Charles A. Danca '91	Daniel A. Devaney '87
Kristen M. Caruso '03	Diane G. Connor '79	Tracy L. Dankmyer '84	Emily C. Dewald '06
Eugene A. Casasanta '70	Donna Connor '94	Garet H. Danvers '78	Margaret R. DeWitt '76
Susan M. Case '73	Camille Connors '88	Brandi Darby	Linda DeZardo '68
Wayne Catanzarite '83	David E. Conrad M'85	Shawn J. David '96	Rebecca M. '99 M'02
Michael A. '79 & Sharon '96 Cercone	Richard L. Conrad '78	Cliff Davidson '06	& Timothy J. '06 Diana
Nettie M. Chaffee '96 M'98	Joseph A. Consolmagno '76	Brandon J. Davis '03	Frances K. Dice M'81
Reginald Chambers III '02	Kathleen E. Cook '06	Carol C. Davis M'05	Lisa DiCerbo M'03
Theresa Chappel '89	Ronald W. Cook '76	Christine M. Davis '83	Lisa M. Dickey '98
Dacia Charlesworth	David E. Cooke '90	Gail M. Davis '90 M'03	Lori L. Dickson '98
Adnan A. Chawdhry	Diane E. Cool '84	James J. Davis M'93	Frank O. DiClaudio '82
Dr. & Mrs. M. Arshad Chawdhry	Valerie L. Cooney '06	John C. Davis '72	Jerome S. DiCristofaro '74
John C. Check '87	Joann Coons	Charles W. Davis Jr. '01	Doris A. Dietrich '52
Lisa R. Chedrick '84	Carol L. Cooper '66	Kathleen K. Davis '01	Randy J. Digiorgio '93 M'98
Richard J. Cherpak M'87	Allan J. Copenheaver M'90	Kristine A. Davis '73	Daryl A. DiLisio '81
Don Cherubin	Timothy J. Cornetti	Lizabeth F. Davis '85	Rocco D. DiLisio '85
Karen B. Chesko	Sarah Cornibe	Sharon A. Davis, D.M.D.	Terry K. DiMascio '76
Anthony G. Chiappetta '75	Laura A. Corrado '90	Timothy M. '86 & Lisa G. M'94 Davis	Paul B. DiNardo '85
Frank A. Chiarizio '94	Bruce & Jane Corrie	Susan Day '82	James F. Dinkel '75
Tambria M. Chinchor '87	Theresa Corso '46	Janice E. De Julio '81	Lois M. DiNuno '85
Laurie A. Chisenhall '87	Apryl N. Cosentino '06	William E. De Marrais '80	Richard M. DiRienzo M'98
Donna M. Chrestay '82	William J. Costantini M'03	Kevin J. DeAngelis '93	Becky Dirks '92
Glenn H. Christiansen '68	Scott M. Costanzo '97	Jessica C. Debo '04	Scott S. Dizel '04
Laura S. Churchill '05	Francine Costello '83	Jennifer L. Debor '06 M'06	Paul & Bonnie Dluhos
Gregory Luke Chwala '99	Matt M. Cottrill '82	Joseph M. Deboth M'95	R. Eric '00 & Linda M. '00 Dodd
Lisa A. Ciaccia '84	Russell H. Couch M'05	Richard A. Dececco M'83	David E. Dolak '73

HONOR ROLL OF DONORS 2005 | 2006

Deborah L. Dolence '74
 Rebecca M. Domine '73
 Joseph A. Dominick M'99
 Kristine R. Domino '81
 Thomas A. Donaldson M'04
 Maureen A. Donnelly '81
 Thomas A. '76 & Maureen A. '76 Donofrio
 Thomas P. Donohoe '79 M'86
 Meghan A. Downey '06
 Sheri M. Downey '89
 Carmen Dragotta '73
 Elaine D. Drake M'99
 Joe & Patti Dreisch
 Janell L. Dresel M'00
 Keith T. Dreshman '01
 Guy J. Dreskler '74
 Mary K. Drexler '80
 James T. Drish '75
 Melissa L. Driskill '03
 Robert L. Drumheller '90
 Kathleen E. Drury '95
 Jessica A. Dubay '06
 Leanne Dubie
 Nancy J. Dubis '80
 Charles M. Duch '84
 Judith C. Due '84
 Linda G. Duffill '65
 Sandra L. Duffy '99
 Thomas J. Dugas '97 M'02
 Daniel G. Duker '91
 Jennifer L. Dumencic '06
 Mary K. Dunaway '85
 George S. Dunbar '93
 Susan E. Duncan '76
 Rose A. Dunlap '60
 Connie L. Dunlevy '63
 James G. Dunn '77
 Reverend Keith A. Dunn '85
 Christina A. Duranko '78 M'92
 Gilbert J. Durosko '82
 E.F. Lane & Son
 Graeme '98 & Nicole M. '99 Eastgate
 Debra A. Eberhardt '80
 Stephanie Eberhardt '90
 Theodore M. Eberhardt '94 M'00
 James A. Eberz '81
 Ken M. Eck M'03
 Mark M. '82 & Denise L. '82 Edgar
 Ronald J. Eggert
 Eileen A. Eicheldinger '79
 Constance L. Eisaman '84
 Mary L. Eisaman '64
 Mark E. Elder '06
 Patricia A. Elford '80
 William M. Elliott, Jr. M'00
 Janet S. Elliott-Palek '88
 Robert J. Emanuele M'87
 Lynn R. Emerson M'87
 Thomas R. Emge '71
 Edgar C. Emmerling '94 M'03
 Susan C. Emory '80
 Jonathan Emrock M'06
 Morry Endres '78
 Philip Engel M'84
 Gary D. English '71
 Susan M. English '87
 Lani J. Enterline '90
 James '83 &
 Charlotte G. '77 M'83 Episcopo
 Sandra S. Erickson '86
 Jonathan F. Ernst '87
 Lynn D. Erskine '99
 Walter L. Eshelman '74 M'96
 Robert G. Eshenbaugh '68
 Anthony R. Esposito '86
 Francine Z. Esposito '85
 Stephanie J. Etter D'04
 Michaelene A. Evanosky '74
 Angela L. Evans '99
 Denise A. Evans '99
 Jean F. Evans '43
 Kathleen M. Ewing '79
 Linda C. Ewing '68
 Marion P. Ezzo '48
 F. G. Papa Associates
 Richard Faccenda '78
 Sharon L. Fadgen '66
 Edward P. Fair '76
 Michael D. Falce '90
 Jane P. Falkowski '69
 Joseph E. Falletta '92
 James P. Fallon M'89
 Carmen A. Faraoni M'94
 Katherine M. Farrell M'94
 Charles J. Fassbinder '52
 Barbara A. Fattore '77
 Gregory J. Faulk M'99
 Wayne Faupel '67
 Robert J. Faurot '78
 Mercedes J. Faust '70
 Nancy G. Fay '68
 Beth G. Fazio '63
 Mr. & Mrs. Tony Fazio
 Susan E. Fehl '06
 Susan K. Fehr M'90
 Charles A. Felix '96
 Beverly E. Fenner '90
 Mary C. Feo '61
 Joseph C. Feola M'89
 Eugenia F. Ferguson '85
 Mara A. Ferguson '90
 Sara Ferlan '58
 Paul G. Fero '89
 Mark D. Ferrante '97
 Mary E. Ferrante '91
 Thomas F. Ferrence M'87
 Steven R. '81 & Barbara '79 M'84 Fettig
 Sara B. Fiefer '05
 Matthew J. Fiering '06
 Carol A. Finch '64
 Jodie A. Fincke M'00
 Karen L. Fink '95
 Shelley Fintor '86
 Sylvia R. Fiorina '61
 Beth Fisher D'02
 Jeannette Fisher '58
 Jennifer Fisher M'04
 John J. Fisher '52
 Paula M. Fisher '83
 Jeffrey D. Fitzgerald '93
 Patricia M. Fitzgerald '87
 Virginia C. Fitzsimmons '92
 Michael M. Flaherty '99
 Timothy E. Flaherty '06
 Shaun L. Fleming '83
 Susan Flesher '03
 Kenneth F. Flodine '82
 Brian Flood
 Greg & Nicole Fly
 Jessica D. Flynn M'94
 Sean P. Flynn '01
 Virginia M. Flynn '75
 Scott Fodi M'06
 Kathryn R. Fonner '04
 Jennifer L. Foreman '83
 Lisa Forgas '83
 Alexander M. Forrest '88
 Michael J. Fortunato '49
 Tanna N. Foster '00
 Lisa M. Fox '01
 Charles P. '82 & JoEllen '82 Foy
 James M. Francis '94
 Nikki L. Franciscus '00
 Stephen J. Franko '90
 Frederick W. Franz '73
 Samuel J. Fratto '96
 Alisha D. Freehauf '06
 John Freehling M'00
 Anthony R. Frick '66
 Devon Fritch M'06
 Alice M. Frolo '62
 Katherine E. Fronzaglio '68
 Frances A. Fuhrer '67
 Lori A. Fulton '99
 William P. Funaro '01
 Lawrence A. Furlong '89 M'98
 Nicole L. Gabriel M'03
 Gregory B. Gaertner '86 M'01
 James H. Galasso '73
 Ann L. Galford '86
 Carol J. Galinac '88
 Brian D. Gallagher '05
 James E. M'95 & Valerie J. '86 Gallagher
 Kenneth E. Gallagher '85
 Patricia J. Gallagher '67
 Renee M. Galloway '93
 Matthew & Susan Galosi
 Amanda K. Galvan '99
 Joseph Gannon '95
 Timothy Gannon
 Cindy K. Ganoe '83
 Jody L. Garber '92
 John M. Garber '72
 David C. Gardner '82
 Garnet E. Gardner '61
 Yitnalem Aredo Garibo '01
 Wendy Garland
 Sundra L. Garner '70
 Patricia A. Garrett '93
 Joyce Garrow '76
 Jamie D. Gasbarro '03 M'03
 Mr. & Mrs. Mike Gasper
 Reed C. Gass M'84
 Rita G. Gates '72
 Harry J. Gaughan '92
 Thadeus R. Gazda '73
 Michael F. Geinzer '05
 Barbara J. Geis M'92
 Carl L. Gendle '78
 Elaine L. Gentry '93
 Georgetown Consulting, LLC
 Ilias Theodore Georgopoulos M'94
 Kathleen L. Gerhardt '83
 Joseph Robert Gerst M'92
 Tyler J. Gething '06
 Kimberly L. Getz '06
 Marilou B. Gibbs '83
 Marie A. Gibson '94
 Mark A. Gibson '79
 Gary L. Gilbert '95
 Wayne R. Gilberti, Jr. M'04
 Carole J. Gildner '60
 Donald T. Giles '87
 Jeffrey A. Gill '01
 John '54 & Betty Gillis
 Erin O. Gingell '02
 Dorothy J. '45 & Howard J. Gittins
 Jessica L. Givens '06
 Anna C. Glass '38
 Linda A. Glassburn M'91
 Cynthia H. Godek '76
 Larry W. Goehring '74
 Robert C. Goffus '50
 Debra J. Goldberg '80

Thomas E. Golden, CPA M'00	Paula D. Hagan '62	Colin M. Henry '03	Lisa L. Horwitz '77
Howard L. Goldner '70	Terence M. Haggerty '87	Paul D. Henry '93	Michael F. Houpt M'97
Sheila L. Golonka '88 M'00	Mary Halama '47	Stephen M. Henry M'95	Renee M. Houpt '87
Lauren N. Gombert '06	William J. Hall '72	Clyde S. Henzler '83	Judy K. Householder '00
Barbara J. Gonzalez '83	Gretchen L. Hallaman '90 M'03	James M. Hepburn '82	Matthew Houser M'06
Kimberly E. Gonzalez '06	Steven L. Hamel M'99	Richard K. Herbster '59	Roberta B. Houston '85
Debra J. Goodnight '77	James D. Hamilton '48	Dianne M. Hereda '65	Sandra M. '97 & Hugh J. '96 Howard
Donald R. Goodrich '81	Susan M. Hamilton M'96	Michael K. Herisko '01	Mary L. Hoyson '72
Nicholas J. Goossen '03 M'03	William A. Hamilton '80	Ellen J. Herman '87 M'97	Douglas J. Hrabik '85
Joseph J. Gorgacz '63	Fred A. Hamm '95	Bernie Herrmann '84	James A. Hrabosky '92 M'05
Karen J. Gorham '83	Scott D. Hammerstrom '92	Nancy L. Herscoe '84	Kristine M. Hrebar M'00
Clarence '82 & Tracy J. Gorrell	Valerie Hampton	Angela M. Hersman '00	Laura A. Hrusovsky '77
Nicholas A. Gorzo '91	Judith R. Hamric '88 M'02	Sherri A. Herstine-Icenhour '87	Barbara C. Huang '81
Norman Gottschalk '67	Charles L. '62 & Karen J. Hanks	Kimberly M. Hess '79	Sally J. Huber-Lewis '99
Gary W. Grace M'87	David I. Hannah '88	Richard A. Hess '72	Frank L. Huck M'97
Sandra A. Grace M'93	Diane M. Hapach '98 M'03	Christine A. Hester '84	Thomas J. Hudak '63
Theresa H. Graff '49	Mary A. Harcha '77	Jane M. Hetrick '57	Mandi M. Hudecek '06
Debra L. Graf-Sullivan '06	Amanda W. Hardway	Michele R. Hetzlein	Charles R. Hufnagel '91
James S. Graham '84	Michael J. Harenchar '52	Barbara Hicks '74	Arthur H. Hughes '50
Mark A. Granatire '96	David L. Harper M'95	Amanda Hideck	Denise A. Hughes '71
Joseph M. Grandizio '90	Edward M. Harrington '91	Nicole R. Hilderbrand '05	Peter S. Hughes M'85
Nancy S. Grant '81 M'87	Charles H. Harris M'88	Kathleen M. Hill '86	Warren '72 & Mary Ann '71 Hughes
Richard A. Graper '94	Pamela S. Harris '86	Linda Hill '74	Jenny R. Hull '04
John J. Grater M'93	Robert J. Harris '91	Krissy Hillgartner	Christopher L. Hultquist '96
Douglas & Deborah Gray	W. Stephen Hart '00 M'00	Janet L. Hinchey '76	Frank D. Humes '75 M'91
Randall A. Gredlein '01	Gregory D. Harteis '05	Mary Ann Hiserodt '03	Cory R. Hunt '95
George W. Green '85	Lori A. Hartge '81	Jessica E. Hisker '06	Angela E. Hunter
Lori J. Green '85	Janette C. Hartley '98	Nicole M. Hitt	Katherine L. Hunter '49
Mary Louise Green '90	Christopher S. Harvey M'00	Allison A. Hixon '96	Kathleen L. Hupchick '71
Michele M. Green '87	Mark L. Hauck '06	J. Christine Hladon '92	Christie A. Hurd '98
Joan E. Gregg '96	J. Perry Haupt '55	Rebecca A. Hoehn M'01	Holly Jo Hurlbert '06
Sharon B. Gregory '83	Simon Hauser M'00	Jessica Hoff	Drew A. '93 & Stacy L. Hurt
Samuel D. Grese '83	Deborah A. Hausmaninger '76	Anne M. Hoffman '90	Roger A. Hurt
Alice K. Gretch M'95	Tracy L. Hawkins '06	Cynthia A. Hoffman '82	Dena J. Huselton '84
Beth A. Griffin '85	Pamela A. Hawthorne '84	Thomas C. Holleran M'84	Wayne E. Hyjek '71
Chiara A. Griffin M'03	Jason R. '96 & Traci A. '96 M'00 Hayes	Thomas P. Holleran '83	Charles W. Hytla '77
David R. Griffith M'83	Keith O. Haynes '91	Benjamin D. Holmes '03	Diane L. Hyziak '86
Francis P. Grimes '92	Sara J. Headley '99	Derek E. Holmes '89	David E. Iddings '06
Robert J. Grossman M'84	Lynda J. Heavner '85	Virginia A. Holmes '46	George L. Ilkka '77
David P. '78 M'93 & Janet L. '82 Grousosky	Mary A. Heckla '65	Diane M. Holohan '98	Diane M. Iman '88
Karly F. Grunebach '06	Wendy I. Hedegore '88	Joann Holt '79	Information Resource Tech., Inc.
Christopher G. Gudukas '93	Cheryl D. Hegyes '69	Gwendolyn M. Holtan '87	David J. Insana '90
Adrienne L. Guelker '61	Maryann B. Heibel '95	Bruce L. Holtzinger '89	Philip J. Ionadi '85
Judith C. Guenther	Judith P. Heine	Ruth A. Holzapfel '89	Joseph L. Iovino '79
Vincent A. Guerra M'98	Christopher J. Heinrich '06	Joseph Homan M'06	Judith A. Irgang '04
Joseph T. Gugliuzza '72	Kathleen Heitzenrater '86	Michael Homner '78	Christopher A. Irvin '84
Nancy Gunia '03	Karl W. Heller '03	Christopher R. Hook '89	Jeff H. Irwin '77
Rita E. Gurganus '84	Metro Heller '83	Joseph G. Hoover '04	Frederick L. Isabella '76
Denis A. Gusty '86	Danny G. Hellmann '89	Elizabeth T. Hopkins '92	Charles F. Ishler '67
Robert P. '89 & Joyce A. '89 Haberstroh	Janet Helma M'04	Linda M. Horan '96	Janet L. Isler '86
David J. Hacke '78	Cynthia A. Henderson '82	Virginia M. Horlick	Caleem L. Jabbour '60
Leroy W. Hackenberg '85	Darcy L. Henderson '88	Pamela R. Hormerte '61	George M. Jabbour
Scott D. Hacker '79	James H. Henderson '71	Jennifer L. Horn '95	David Jackson
Dana C. Hackley M'06	Scott A. Henderson '88	Richard I. Horn '63	Lydelle L. Jackson '04
Shelley R. Haddox '06	Christopher P. Henninge '03	Bernard Horovitz	Robert W. Jackson '85
Susan C. Hadfield '05	Andrew Henry	Debra L. Horvath '05	TaWanda LaShalle Jackson '04

HONOR ROLL OF DONORS 2005 | 2006

Karl Jacob '82
 Tracey D. Jacob '91
 Debra A. Jacobs '80
 Luke M. Jacobs '87
 Martin A. Jacobs
 Valerie L. Jacobs '04 M'06
 Timothy A. Jacoby '73
 June M. Jahn '95
 Cynthia A. James '97
 Mark W. James M'03
 Timothy R. James '90
 Joan M. Jandrasits '74
 Thaddeus J. Janicki '00 D'03
 Michael E. Jarvinen M'01
 J. Jeffrey Jaskolka '99
 Daniel Jaszka
 Meghan E. Jent '05
 Marion M. Jereb '49
 Edward Jerina '71
 Andrew Jerome '49
 Marion F. Jesulaitis '61
 Bernadette J. Johnson '99
 Bryan & Erin Johnson
 Eleanor M. Johnson '79
 Erik C. Johnson '94
 Irene I. Johnson '63
 Thomas T. Johnson '71
 William S. Johnson '77
 Lawrence Johnston '72
 Ronald E. Johnston '63
 Lyda H. Jones '61
 Michael S. Jones
 Phyllis A. Jones '95
 Robert S. Jones '93
 Timothy R. Jones '81
 Christopher M. Joyce M'95 M'96
 Richard A. Juby M'99
 William F. Jurmann '77
 Michael Kachuta '65
 Joseph H. Kaecher '50
 James J. Kail '80
 Mr. & Mrs. Thomas Kakos
 George X. Kalogeris '99
 Hollie L. Kalp '66
 Joseph Kaminski '63
 John Kamler '80
 Kurt J. '91 & Beth A. '95 Kampsen
 Brain S. Kane
 Robert W. '74 & Fay H. '82 Kane
 Stephen Kapetanovich '73
 Maria A. Kapp-Yost '04
 Samuel Karlo '85
 Bernard G. Kastan '86
 Scott A. Katonka M'94
 George L. Katsuleris '63
 Tracy Kautzman '99
 Melvin L. Keagle '69
 Karen M. Keane '65
 David J. Kearney M'02
 Deborah L. Kebles '87
 Francine P. Keefer '81
 Thomas E. Keefer '93 M'02
 Valerie J. Keeley '94
 Theodore B. Keenan '71
 Barbara L. Keene '06
 James R. '83 & Lesley Keener
 Diane M. Kehlert '86
 Jean M. Keil '87
 Alana J. Keister '05
 Dennis G. Keller '72
 Nicole R. Keller
 Jeremy M. Kelley '06
 Stephen E. Kelley '97
 Ashley S. Kelly '06
 George E. Kemp M'91 & Mary Marier M'91
 Loretta B. Kendall '93
 Jeffrey Kennedy M'06
 Patrick S. '92 & Marci A. '91 Kennedy
 Robert A. Kennelly '93
 Priscilla A. Kent '83
 William J. '88 & Deborah J. '88 Ketter
 Mary Ann Kidd '81
 Veronica L. Kiebel '70
 Francis A. Kilinsky '71
 Jennifer E. Kim '95 M'05
 Jeffery L. Kimmel '99
 Joanne T. Kimmell '75
 Cynthia C. Kinder '64
 Delores J. King M'98
 Patricia Macioce Macioce King '59
 Stephanie A. Kinkus '04
 Robert J. Kinzler '04
 Kiplivit, N.A.
 Andrew P. Kirish M'05
 Herschel W. '04 & Patricia M. '81 Kirker
 Tina M. Kirsch '01
 William A. Kirtley '68
 William Kislock '74
 Judith Z. Kitchen '73
 Charlene A. Kitzinger '95
 Robert T. Kleeb '75
 Kenneth B. Kleinert '70
 Margaret C. Kleppick '84
 Robert J. Kline '74
 Lana P. Kling '62
 Judith L. Klinsky '74
 Timothy J. '05 & Stacie J. M'02 Klocek
 Erik W. Klug '98 M'00
 Dana M. Knapp '02
 Gregory M. Knebel '91
 Jack C. Knee
 Kathie A. Kneff '65
 Karen A. Kneib '80
 Philip Knight '80
 Richard M. Knizner '83
 Thomas A. Kobus M'81
 Annette Knouse Kohn '82
 Thomas S. '93 & Susan M. '83 Kohser
 Ellen M. Kokal '87
 Angela M. Kokanos '06
 Gust Kokanos '74
 Grace Kolander '60
 Randall P. Kolesar '71
 Lois J. Kondak '45
 Karen H. Korchnak '83 M'88
 Jennifer L. Kordesich '02
 Nadine D. Kordich '80
 Barbara A. Kos '61
 Heather R. Koscevic '95
 Denise P. Kosis '01
 Scott A. Koskoski M'02
 Darlene Kosloff
 Beverly A. Kossum '91
 Richard W. '71 & Mary Lou '86 Kossum
 Christine C. Kovac '75
 Charles F. Kovach M'96
 Laurie S. Kovach '78
 Paul Kovach '05
 Mary Ruth Kovak M'99
 Sandra L. Kovalik '63
 John & Pat Kowalski
 Paula A. Kozlowski '87
 Carol A. Krall '95
 William C. '64 & Kathryn '62 Kramer
 Nicky D. Krapanza Jr '00
 Donna L. '76 & Kenneth J. '78 Krason
 Mary Anne Krason '59
 Judith E. Kraushaar '62
 George E. Krauss '75
 Vivian C. Krawczewicz '85
 Randy G. Kreider '91
 Karen S. Kremasky '80
 Patricia L. Kretschman
 Christine L. Krieger '91
 Bruce A. Krist '90
 Joseph W. Krokonko '73
 Teresa M. Krolak '74
 Richard A. Kruger '93
 Sharon A. Krupka '95
 Charles A. Krznaric M'86
 Joanne M. Kubinski '77
 Howard Kubitz '66
 Thomas M. Kublack '82
 Karol L. Kuchar '67
 Carol J. Kuhnhein '82
 Linda A. Kulzer '71
 Stephen Kundman
 Gerard R. Kunic '81
 Amanda M. Kurilko '01
 Timothy M. Kurnocik '06
 Deborah L. Kushner '82
 Melissa A. Kutcher '05
 Amanda A. Kvortek '06
 George H. Kwiatek '78
 L.D. Rollinson Agency
 Bonnie J. Labriola '71
 Constance B. Lacquement '81
 James Laczko '05
 Joann L. Ladesic '83
 D. Gregg Lafferty '99
 David J. Lamanna '87
 Kathleen Lamarca '86
 Robert T. Lambert Jr. M'02
 Richard W. Lamer '89
 Janet Hess LaMonica '74
 Norman E. Lancaster '91
 Patricia A. Lane '92
 Brian R. Lang M'01
 Edward J. Lang '87
 Ellen G. Langas Campbell '79
 Larry W. Langhurst
 Mary Karen Langston '86
 Michael A. Lanigan '91
 Kenneth Lapinski '80
 Robert G. Larko '95
 Barbara D. Larson '70
 Eric A. Larson '84
 Robert L. Larson '90
 Eric M. Laska '06
 David M. Lassige M'01
 Theodore E. Laszlo '77
 Cathleen P. Latorre '06
 William I. Latta '85
 Louis Lattanzio '71
 Victoria M. Latusick '05
 Karen A. Latzy '99
 Mark A. Lauer M'95
 Toni A. Lauso '01
 Barbara M. Lavelle M'88
 Ian M. Laverty '06
 Jayne L. Lawton '74
 Lenita K. Lawyer '89
 Kenneth Lazarowicz '81
 Domingo R. '77 & Sharon A. '86 Lea
 Gloria J. Lechner '43
 Angela C. LeDonne '85
 Marilyn E. Ledonne '71
 Cathryn C. Leeds '05
 Maryann Leftwich '68
 Charles J. Leindecker '96 M'02
 Teresa A. Leipchack '04
 William Lelievre
 Robin W. Lemieux M'01
 Rebecca L. Lemon '98

Mario W. Lepore '72	Amanda L. Lucas '06	Joseph A. '91 & Richelle K. '89 Marszalek	Melissa J. McGallis '95
Linda A. Leschak '85	Susan L. Lucot '05	Antoinette M. Martin '85	Karen D. McGinley
Cynthia A. Lesifko '96	Janis E. Ludwig '53	David W. Martin '90	Marlane McGinnis '88
Lena Lesko '98	Mary B. Lunn '61	Hal E. '79 & Carol Martin	Sandra J. McGinnis '87
Dianne T. Lesueur '67	James Luparello, III '06	Hope M. '92 & Thomas V. '85 Martin	Kevin H. McGoun '84
Richard Levitt	Dorothy J. Lust '68	James K. Martin M'85	Beth A. McGrady '90
Bill Levy	David P. Lusty '83	Kelly J. Martin '01 M'04	Regis C. McGrady '60
Kathleen D. Lewetag '94	Robert J. M'82 & B. Fay '81 Luther	Michael L. Martin '88	David L. McGrane '87
Amy L. Lewicki '05	Connie L. Lutz '87	Thomas E. Martin '88	Nancy A. McGregor '87
Elizabeth A. Ley M'96	Alyson J. Lyon '81 M'98	Tina A. Martin '87	James P. McGrogan '75
Jason M. Leydig '98	Haiying Ma M'03	William J. '77 & Lori L. '90 Martini	Jennifer L. McIntire '94
Quansheng Liang M'02	John P. MacDonald '96	Joseph W. Martis Jr. '02	Richard K. McJunkin '68
Michael D. Libbon M'03	Miranda J. MacDonald '73	Michael A. Mascio '87	Suzanne McKain Fallon '86
Suzanne B. Licciardello '86	Joseph S. Macel M'90	Anthony J. Mastellino '87	Lois M. McKee '58
Barbara J. Lightfoot-Smith '88	Albert E. Macino '58	Meghan C. Matesa	Susan P. McKenna '99
Rochelle S. Lilien M'97	Mauro L. Macioce M'95	Carl D. Mathews '81	Donna S. McLaughlin '96 M'99
Peter F. Linck '02	Thomas W. Mack '80	Melanie R. Matter M'86	Janet McLaughlin M'05
John J. Lind '96	David M. MacLean '84	James H. Matthews '74	Todd McLean '94
Fredrik J. Lindner '96	David B. MacLeod '95 M'97	Judith Matthews '93	Melissa L. McMaster '06 M'06
Ida C. Lindner '34	James B. MacPherson '72	Amy E. Mattie '93	William P. McNally '68
Raymond '86 & Bethany Claus '92 Lindow	Stephen W. Macurak '92	Richard W. Matz '93	Thomas McNamee M'91
Victoria E. Lindsey '98	Juleen M. Madera '93	Matthew W. Maximovich '95	John K. McPherson '81
Willie Lindsey '78	Amy M. Madonna M'96	Vernon A. Maxwell '83	Gregory J. McQuaide '83
Mark W. Linzenbold '90	Wanda M. Magone '43	Stephanie G. May '91	Scott P. McQueeney '05
Amy E. Lipscomb '01	Patricia L. Mahony '78	James W. Maynard	Richard L. McQuiston '68
Gina L. Lisanti '06	Candice J. Mahr '92	Eugene Mazzuca '03	Richard P. McVay '72
Thomas W. Listwak M'85	Nancy T. Malley	Michael L. McAfee '06	Charles W. McWilliams '73
Lisa M. Litfin '06	Jamie R. Malloy '98	Joseph McAndrews M'06	William J. Meade '76
Shuping Liu M'02	Margaret A. Malloy '83	Robin J. McAninch M'06	Teresa C. Meadows '75
Joseph M. '86 & Marion L. '81 Lizik	Maribeth A. Malloy '78	Michael J. McArdle '75	Lois L. Mears '62
Allen H. Lloyd '75	Patricia D. Malloy '86	Jeffrey S. McBain '84	Kert R. Mease '96
Lawrence S. Lloyd '78	Margaret Maloni '94	Gregory T. McBride '99	Carol A. Meek '82
Robert & Virginia Locke	Melinda A. Maloy '86	Christine A. McBrien '97	Mary A. Meerhoff '98
Robert D. Locke '83	Margie Mancabelli '60	Robert J. McCafferty, Jr. '98	David J. Meese '05
F. P. Loedding '92	Deborah L. Mancino '90	Brian F. McCahill '06	Ronald E. Meier '81
Cheryl Bolster Loesch '64	Daniel J. Mancosh M'86	Ross W. McCalmont, Jr. '98	Donna L. Meilahn '70
Karen M. Lofe '88	Joseph A. Mangieri '73	John P. McCann '82	Victoria L. Mell '03
Sharon R. Londino '87	John A. Mangin	Patricia K. McCann M'02	Mary E. Melnick '99
Mary L. London '62	Darryl R. Manley '86	Lisa J. McCarl '87	Lanel R. Menezes M'04
Pauline Long D'05	Rayford A. Mann '83	Paula A. McCarl '00	L. S. Mensch '70
Richard R. Long M'92	Tara L. Manna '06	Maureen L. McCarroll '91	Greg R. Mercer '02
Sondra K. Long '57	Harriet J. Manning '63	Sean H. '89 & Pamela M. '88 McCarthy	Lisa M. Merkel '03
Suzanne M. Long '84	Cyrus Manouchehrian	Mary B. McCauley '91	Laurie D. Meshanko '00
Linda M. Longo '86	Marilee Marcantonio '76	Jeffrey J. McClay '92 M'99	James C. Messina '72
Anthony T. Loomis '05	Elizabeth Marchilena '71	Joshua D. McClelland '05	Thomas E. Messineo '87
Barbara J. LoPresti M'89	Geralyn B. Marchilena '86	Paige & Andrew F. M'00 McClure III	Donald K. Metcalf '84
Michael T. Lordi M'82	Brian C. Marcin '82	Sheila McCollum '81	Claudia J. Metcalfe '93 M'98
Deborah L. Lordo '72	Joshua D. Mariana '06	Michele Renee McCoy D'02	Edward C. '63 & Carolyn J. '63 Metting
Janet E. Lorenzato '74 M'84	Marlene E. Mariuzza '87	Helen K. McCracken M'84	Theodore F. Mewkalo '64
Albert M. Lorenzetti '93	James E. Marker '02 M'02	Karen A. McCrea '85	Catherine M. Mey '00
Andrea G. Loughner '81	Allan D. Marko '87	Kim A. McCutcheon '75	Elmer J. Meyer '81
Angela M. Lovely '05	Curtis P. Marlatt M'97	Elaine M. McDermott '98 M'01	Jody L. Meyer '86
April J. Lowden '97	Barbara A. Marsen '99	Mark T. McDonald '02 M'04	Cornel L. Mhley '71
Michael J. Lowery '89	James A. Marsh '78	Martha J. McDonald '41	Constance F. Michael '73
Bryan K. Lowrie '83	Salli A. Marsh '78	Curtis B. McFadden '77	Thomas S. Middlemiss '50
William E. Luca '94	Michael A. Marshall '94	Mary McFeely '60	John F. Mihm '95

HONOR ROLL OF DONORS 2005 | 2006

C. Lynn Miklos '81
 Joseph S. '04 & Nina M. M'00 Miklos
 Terri F. Mikolajczyk '88
 Laura L. Mikush '89
 Donald R. Militzer Jr.
 Amy S. Miller '06
 Anita L. Miller '81
 Ms. Beth Miller
 Catherine G. Miller '82
 Colleen M. Miller M'85
 Cynthia A. Miller '94
 Dawn E. Miller '84
 Douglas A. Miller '92
 Gretchen C. Miller '95 M'97
 Howard B. Miller '61
 Jack L. '73 & Carol '64 Miller
 Margie-Jo Miller '86
 Nicole I. Miller '06
 Sandra A. Miller '96
 Hope P. Milliken '89
 Daniel C. Mills '72
 Diane M. Mills '88
 Dorothy J. Mincy '79
 Beth H. Minich '84
 Donald J. Minihan '04
 Renee Mink '81
 Dennis & Kathryn Mishler
 Beverley A. Mitchell '69
 Greg Mitchell '94
 Jaymie Mitchell M'97
 Donald E. Mock '76
 Lawrence G. Mocniak '80
 Melanie L. Moffo '06
 Joseph J. Mokran '93
 Eileen A. Molcany M'97
 Gloria J. Molenaar '65
 Mary J. Molinaro '85
 Ashli M. Molinero D'04
 Elaine M. Moltzen '03
 Lisa L. Mongell '85
 Beth A. Mongelluzzo '79
 Molly M. Monnoyer '95
 Raphael J. Monti '68
 Judith A. Montini
 Marilyn E. Moon '56
 Rodney D. Moon '83
 Susan H. Moorcroft '89
 David M. Moore '95
 Maudine M. Moore '66
 Nephateria N. Moore '99
 William Moore
 M. Lynn Gran Moran '67
 Monique C. Moreland '01
 Cathleen M. Morgan '00
 Iola M. Morrisey '64
 Morrisey Svcs. Ltd.
 Stephen C. Morrocco '96
 Connie L. Morrow '72
 Ruth S. Morse '69
 Marlene B. Moseh Hetrick '91
 Janet S. Moseley '78
 Karen A. Moser '74
 Barbara A. Moss '89
 David A. Moul '75
 Timothy J. Moury '87
 Russell R. Moyer '85
 Paul & Rosemarie Mrkonja
 Kenneth J. Mueller '78
 Raymond A. Mueller '48
 Sharron L. Muia '90 M'99
 Helen F. Mullen
 Joseph A. Mullen M'04
 Lloyd N. '03 & Anita M. '83 Mullin
 Jean E. Mullins '68
 Justin C. Munnell M'03
 Richard Munsie '91
 Calvin D. Murano '82
 Christie L. Murphy '02
 Maureen S. Murphy '81
 Pamela J. Murphy '90 M'95
 Thomas E. Murphy '75
 Jill A. Murrin '78
 Patrick E. Murtha '77
 Ron W. Muschar, PHR '97
 Patricia G. Musselman '67
 Kara E. Musser '92
 Brian C. Myers '92
 Gail F. Naab '83
 Kathleen L. Nagel M'90
 Mary J. Nagel '57
 Scott C. Nagy '04
 Jean A. Nalesnick '85
 Richard A. Nania '85
 Frances G. Napoleone '71
 Jessica L. Naspinski '73
 Barbara D. Natrass '91
 Joanne C. Naugle '77 M'82
 Jeffrey J. Navarro '04
 Jessica B. Neaman '01
 David J. Nebel '88
 Eileen Neely
 Jaclyn G. Neice '06
 Sandra M. Neiderhiser '61
 Christina R. Nelson '79
 Edward R. Nemecek '57
 Melissa A. Nemenz '06
 Joanne R. Nemmer '89
 Joseph V. Nerone '61
 Nancy C. Neugebauer '74
 Judith A. Neumann '64
 Mark H. Newberg M'96
 Patricia A. Newcaster '63
 Howard S. '74 & Judith A. '93 Newcomer
 Tracy Newman M'06
 Josie Nicholson
 Jennifer L. Nicholson-Raich '98
 Joseph P. Nicola '81
 Terry F. '80 & Polly '83 Nicola
 Lynn A. Nikolas '90
 Thomas W. Nixon '78
 Robert W. Norberg
 Stacy L. Norman '05
 Bret M. Noroski '99
 Robert Noroski
 Northeast Conference
 William & Ellen Northy
 Rosanne Novak '94
 Laura J. Novelli '88
 Erin B. Nuber '04
 Daniel A. '82 & Diane S. '82 Nugent
 Nathan Nunley M'03
 Benjamin D. Oakley '83
 John D. O'Banion
 Leonarda M. Obarski
 Terryl F. Obasanya '83
 Richard Oberlander M'84
 Mihaela E. Obreja M'05
 R. Carole O'Brien '93
 Michael P. Obringer '06
 David Ocilka '78
 Jon C. O'Data M'93
 James R. Ogg '04
 Kristen A. O'Hara M'05
 Carol I. O'Hare '98
 Joyce I. O'Hare '61
 Tracy L. O'Lare '02
 Jefferie A. O'Leary '85
 James J. Olesnanik '66
 Chad M. Oliver '01
 Joe Olson
 Toni L. '84 & Dennis J. '82 Ondek
 Robert G. Ontolchik '02
 Catherine A. Orel '95
 William T. Orlandi M'01
 Michael D. Osborn M'02
 Allen C. Otto '75
 Anne Paci '63
 Julie A. Paden '97
 Linda S. Padget '83
 Kelsey O. Pagani '97
 Charles A. Page '81
 Ronald C. Pahel '68
 Michele M. Pahnke '92
 Selina D. Palermo '83
 Andrew Malachi Palko '04 M'05
 Barbara B. Palmer
 Christina A. Palmer '87 M'90
 Jill Palmer '84
 Carolyn S. Palone '84
 Kristie Pampena '03
 Lionel Pamphile '86
 Josephine Pandolph '59
 Julian B. Pannill '04
 George M. Panno '95
 Darlene J. Paolicelli '81
 Darrell J. Papinchak M'01
 Anthony J. Paravati '80
 Krystal L. Parenteau '06
 Lily T. Parham M'98
 George P. Parillo '04
 Jamaal A. Parker '02
 William E. Parker '85
 Parkhurst Dining Services
 Ward R. Parkins '82
 Jerrell R. Parks '06
 Misty N. Parshall '00
 James Pasculle '72
 Vincent Pasquarelli '74
 Beverly Pasquarette '58
 Patricia Pataky '76
 Rita G. Patchan '83
 Laura Patchin '41
 Marco N. '96 & Dawn M. '93 Patitucci
 Michael D. Patsy M'97
 Connie L. Patton '00
 Amy Patzwaladt '05
 Daniel J. Paull M'83
 Paul V. Paulsen '85
 Thomas A. Pavlik '72
 Carol L. Pawlos '93
 John W. Pawlos '93
 Terry A. Pazu '70
 Michael D. Pearce '01 M'03
 Diane Leonard Pearson '85
 Robert T. Peck '01
 Sara J. Peffer '99 M'02
 Benjamin T. Pegg '06
 Richard Pelesky
 Anita L. Pellegrino '80
 Katherine G. Pellegrino '68
 Barbara J. Penna
 Kimberly A. Pennine '91 M'03
 Paul W. Peoples '89
 Elsa P. Perkins '81
 Margaret C. Perlik '49
 Kim E. Perry '78
 John W. Peters '90
 Lorraine A. Peterson '75
 Elena M. Petrak M'05
 Douglas D. '94 & Liane M. '95 Petras
 Patricia A. Petri '68
 Henry L. '85 & Lisa M. '84 Petrilli
 Cynthia M. Petrisko '03
 Karen J. Petrosky '68

Michaelleen C. Petrosky '77	Gary W. Priore '71	Jeffrey M. '77 & Melinda M. '79 Rice	Marian E. Ruckert '81
Edward J. '01 & Jennifer M. '95 Pfab	David E. Pritts '95	Judith A. Rice '71	Karen L. Rue '67
Lillian G. Pfeifer '78	Prompt Mailers inc.	Margaret R. Rice '62	William G. Ruffner '78 M'85
John W. Pfender '71	David M. Proud '99	Sonya M. Rice '92	Rebecca J. Rumbaugh '06
David W. '83 & Tracey A. '81 Phillippi	Ted '65 & Diane Pruszynski	Stephen J. '97 M'06 & Karen M. '95 Rice	Lila R. Runkle '48
Ronald E. '96 & Renee J. '95 Phillips	Laurie A. Pryzbyski '73	Susan A. Richardson '69	Arnold T. Ruppert '82
Kevin E. Phillis '82	Judith Puff '94	Lori Ricupero	Angela D. Rush '65
David J. Picard M'96	Adolph A. Pugliese '72	Debra A. Ries M'96	Corinna M. Ruskin '06
Carol A. Pierce '84	Sam W. Puglisi '89	George & Laura Riggan	Michael Rusko '54
James J. Pierson M'92	Kerry M. Pulaski '91	Kevin Rimer M'06	Dale R. Rusnak '91
William A. Pietragallo II	Joseph D. Puleo '80	Jonathan W. Ringer '02	David J. Russell '91
Roger H. Pigford '05	Denise S. Puskaric '89	Lois I. Rippin '95	Gene P. Russell '65
Patricia Pikoulas M'86	Wei Qiang '02 M'04	Cyril C. Ristoff, Jr. '99	Mary Ann D. Russell '74
Michael F. Pillar	De Quan '87	Sean K. Ritchie M'05	Kara D. Rutowski '91
Darryl E. '75 & Wendy '74 Pingor	Patricia T. Quirin M'88	Jay M. Ritenbaugh '79	Catherine Rutter '71
Stephen J. Piotrowski '86	Darlene J. Rabe '70	Elaine L. Ritz '88	Jill L. Ryan '85
Jonathan R. Piper M'96	Joseph T. Rabickow '72	Paul M. '88 & Mary E. '86 Rizzo	Shawn M. Ryan
Frances E. Pischke '87	Kristina Rabius M'06	Deborah A. Robash '85	Jay M. Rymniak '90
Dennis G. Pishney '95	Jeannine M. Rachor '91	Charlyne M. Robb M'89	Mr. & Mrs. William Sader
Josephine F. Pitta '80	Donald L. Radovich M'90	Johannah M. Robb '80	Dorothy T. Sadosky '61
Linnea E. Plaskon '64	Jean E. Rafferty '78	Cheryl D. Robbins-Lufkin '73	James V. Sadvari '80
Virginia H. Platt '61	Bruce E. Raines '84	Randal N. Roberty '79	Craig M. Sakely '02
Francis A. Platz '90	Mavis M. Rainey '88	Pamela R. Robinson '96	Philip M. Salera '05
Vincent C. Plaveccky '00	Martin J. Ramaeckers '02	Barry C. Robison '80	Arthur J. Sales M'00
Kathleen Plesic '77	Robert D. Ramanna '74	Kerry A. Robison '84	William T. Salsbury '62
Susan L. Plesniak '84	Dorreen W. Rankin Allen '88	Roseanne M. Rockage '81	Timothy F. Salvati '86
MaryAnn Plowcha '66	Richard & Jeryl Rankin	James S. Rockovich '65	Mary Ellen Samek '84 M'88
Mary Jo Plunkard '01	Jeff Raso '88	Nicholas Rodriguez '01	Michael G. Samek '00
Amie M. Podolak M'01	Michael S. Ray M'96	Janice M. Rogacki '70	Meagan Sampogna M'04
Carole A. Poelcher-Kane '91	Diane M. Rayzer '86	Jeanette R. Rogers '97	Thomas E. Samuels '49
Mary Ann Polasko	Ronald V. Razete '85	Mark A. Rogers '06	Paul W. Sandrock '71
Janet A. Polhamus '70	Mary K. Razum '85	Charles A. Rojik '68	Marsha A. Sankovich '62
Patricia E. Polito M'95	Richard A. Recker '82 M'84	David J. Roman, Jr. '06 M'06	Julie M. '02 & Marc D. '03 M'03 Santana
Laura A. Pollock '82	J. C. Rectenwald '71	Cathy A. Romano '80	Catherine M. Santich '88
Arthur R. Pomerantz '77	Susan L. Reeb '89	Colleen S. Rosander '96	Gregory M'04 & Kimberly Rae M'01 Santillo
Dean A. Ponterio '81	Craig P. Reed '88	George F. Rosato '87	Anthony L. '89 & Pamela C. '83 Santoro
David A. Pontoriero '95	Dorothy B. Reed '47	Cheryl I. Rosenfield M'83	Amy M. Saputo '97
Douglas G. '78 & Karen M. '76 Poole	Thomas E. Reich '87	Lorraine Rosenthal '89	Debbie Sarver
Nancy L. Popovich '93	Andre' H. Reid '03	Robert Rosinsky '72	Robert F. Sasinoski M'84
Joan M. Porac '62	Kristie L. Reid M'88	Dwayne M. Ross M'02	Susan L. Saturley '91
Joachim V. Porco '77 M'82	Beverly S. Reilly '85	Eileen M. Ross '79	William P. '53 & Jo Anne '59 Sauereisen
Robert C. Pore '73	Edward C. Reiser '75	Sherie A. Ross '67	Stephanie Saxton
John V. Poremba '51	Mary Ellen Reiter '70	Rossi & Co.	James P. Scanlon '88
Denny Postufka	Edward P. Religioso '89	Anthony G. Rossi M'93	Jamie Fallone Scarano '90
Richard B. Potter '80	Michael T. Relihan '05	Jane K. Roth '41	Philip J. Scarsella '78
Carol L. Powell '61	Diane A. Renkin '79	Kristin M. Roth '06 M'06	Glenn A. '50 & Marion J. '49 Schaefer
Linda Powell '03	Linda Renninger '86 M'99	Nancy H. Roth '84	Rena M. Schake '01
Patrick A. Powell '75	Janet G. Repasi '83	Elizabeth A. Rotto '00	William E. Schaupp '97
Karen C. Power	Barbara J. Rettinger '02	Jacquelin A. Roussey '78	June M. Schaut '69
Carolyn J. Pozzuto '85	Robert J. Reubi '94	Eva-Jo Roussos '88	Martha L. Scheidmantel '66
Karen Preininger '70	Carol A. Rex '02	Amy L. Row '06	Patricia A. Scheller '89
Neal P. Prence '81	Cynthia A. Reynolds M'02	Edna Rowland '61	David C. Scherer '85
Wayne S. Price '83	Angela M. Rhad '90	Gail P. Rowlands '92	Janet A. Schlabach '74
Anna Marie Prichard '71	Arthur M. '02 & Charlene '01 Rhone	Bernadette A. Rozman M'97	Michelle Schlick '04
Todd A. Prichard '06	Emidio G. Ricci '72	William R. Ruane M'87	John Schlueter '76
Sophie Prigorac '65	Donald R. Rice '90	Gerald L. '48 & Ethel '50 Rubin	Janet L. Schmelzer '78

HONOR ROLL OF DONORS 2005 | 2006

William E. Schmider '76
 Michael A. Schmidt '90
 Thomas & Alice Schmidt
 James R. Schmitt '66
 Daniel L. Schneider '85
 Heidi L. Schneider '06
 Elaine Schnieders '64
 Michael R. Schofield '00
 Rick Schooley
 Vincent E. Schrader II '97
 Jennifer S. Schrauder M'96
 Mary A. Schreengost '75
 Jonn C. Schrimper '97
 Joann E. Schroeder '05
 Ned Schroeder
 John C. Schrott '57
 Michelle M. Schultz '75
 Paula M. Schultz '96
 Jeffrey F. Schwartz '05
 Michael P. Schwartz '98
 Roy R. Schweitzer '55
 Ernest E. Sciuilli '98
 Lorenzo G. Sciuilli '96
 Edward Sconzo '83
 Bonnie R. Scott '81 M'88
 Cheryle R. Scott '67
 Kristi A. Scott '70
 Lawrence E. Scott '70
 Margaret L. Scott '40
 Monika L. Scott '97
 Ronald A. Scott '96
 Agnes M. Scott-Cleveland '83
 Paul M. Seben '70
 Jennifer S. Sechan '91
 Kenneth J. '82 & Anna M. '82 M'89 Segner
 Jerome L. Seidel '87
 Robert F. Seiler '49
 Nicholas J. Sekel M'88
 Bradley K. Semonik '99
 Sherri E. Sempf '74
 Susan L. Semple '74
 Ronald K. Senerius M'04
 Joseph T. Senko M'83
 David '86 & Victoria M. '86 Serafini
 Michael J. Seres '03
 Cathy S. Shader '79
 Chris A. Shadron '78
 John W. Shadursky '95
 Shadyside Presbyterian Church
 Barbara J. Shaffer '87
 Darlene M. Shaffer '89
 Alexander A. Shand '89
 Denise M. Shanholtz '80
 Maureen A. Shank '03
 Robert J. Shannon '52
 Helen Sharrer '66
 Joseph E. Sharrow M'02
 Denise '74 & Richard W. '74 Shaulis
 Virginia H. Shaw
 Heidi J. Sheaffer '90
 Glenda L. Shearer '63
 William C. Sheers
 Joyce U. Sheets '83
 Harold E. Shekels '76
 Paul F. Shelton '70
 Edward W. Shenk '68
 Nancy S. Shenk '67
 Dan & Margaret Shepherd
 Patricia A. Shepperd
 Joan E. Sherbak '91
 Debra Sherman '81
 Terry J. Sherockman '93
 Nicolette J. Sherwin M'03
 Shobhan M. Sheth '86
 Daniel D. Shevchik '41
 Sandra A. Shimko '83
 Rebecca S. Shirey M'03
 Marguerite T. Shiring '43
 Dorothy E. Shirk '43
 Mrs. Cheryl Shively
 Deborah L. Sholly '88
 Paul Sholtz '84
 Alvin R. Short
 Amanda R. Short '04
 Christopher J. Shovlin
 James A. '80 & Celeste T. '79 Shuback
 David D. Shulik '81
 Steven P. Sibenik '79 M'82
 Kathie A. Sica '70
 Donald D. Siebka '96
 Rita W. Sieczkowski '80
 June E. Siembieda '67
 Dolores O. Simkovic '52
 Mark A. Simon M'94
 Michael N. Simons '03
 Michael E. Simpson '04
 George W. Sirakos '76
 Joseph H. Sites M'00
 Kenneth A. Sitko '73
 Thomas K. Skelton '89
 Diane & Ed Skopinski
 Karen L. Skurcenski '92
 Dennis T. Skurka '98
 Melanie B. Slattey M'86
 Barbara A. Sleith '66
 Gary R. Sliman M'82
 Paul Slomer M'91
 Jeffrey A. '90 & Patricia C. '95 Smallwood
 Donna M. Smidga '78
 Jessica Smilek
 Barbara W. Smith '65
 Bryan D. Smith '03
 Catherine E. Smith '88
 Dale E. Smith '65
 J. Michael Smith
 John R. Smith '79
 Kelly E. Smith '03
 Lisa M. Smith '78
 Lorraine B. Smith '68
 Mary J. Smith '54
 Melanie S. Smith '88
 Michael J. Smith '77
 Pamela L. Smith '99
 Roger W. Smith '84
 Ronald J. Smith '81
 Sherri J. Smith '86
 Susan M. Smith '84
 Wilbur Smith '60
 William J. Smith '73
 Jerry R. Smoyer, Jr. '00
 Narda L. Snell '60
 Stanley E. Sniegocki '75
 Charles E. Snyder '81
 Mary Christine Snyder M'99
 Ronald S. Snyder '82
 Robert E. Sobocinski '80
 Susan S. Sokol '68
 Donald K. Solomon '55
 Diane M. Soltis M'98
 Daniel D. Somma '85
 Sharon A. Soodik '76
 Martha A. Soroka '64
 Jodi L. Soule M'99
 Maxine E. Spahr '82
 Diane Spangler '79
 Erich M. Spannuth '97
 Jeff S. Spardy '84
 Kimberly M. Spath '01
 Francine Spear '92 M'01
 Sarah M. Spec '06
 Bradley S. Spence M'00
 Ed F. Spencer '80
 Jared B. Spencer '02 M'02
 Robert E. '80 M'94 & Cheryl M. '91 Spencer
 Susan M. Spero '84
 Karen E. Spiegel '06
 Herman N. Spinelli '65
 Kenneth D. Spokane M'99
 Paul D. Spradley '03 M'06
 Kelly R. Springer '02
 Robert F. '73 & Marilyn M. '74 Sproule
 James C. '82 & Joy M. '83 Sprowls
 Robert A. Sprung '89
 Dana Stack '02
 Ronald M. Stadler '01
 Andrew J. Stalter '06
 Paul N. Stamatakis '81
 Mark J. Stampfle '06
 Monica J. Stanton '06
 Joseph L. Stark '05
 Larry & Judy Stark
 Kevin T. Staub '60
 Heather A. Stead '03
 Herbert G. Steele M'81
 William W. Steele '49
 Kristen H. Steen M'02
 Matthew E. Steenson '94
 Elizabeth Steigerwald '85
 Brandon J. Stein '03 M'03
 Susan A. Steirheim '78
 Kimberly J. Steliotes '92
 Sharon Stemler
 Ronald Stephan '75
 John J. Stephansky M'97
 Joy O. Stephens '05
 Thomas L. '99 & Jill M. '98 Sterling
 Charles H. '71 & Kathryn E. '73 Stern
 Carl Stevens
 Deborah L. Stevenson M'04
 Jane L. Stewart '64
 Doug J. Stocker '06
 Alvin L. Stoker '74
 Patricia D. Stokes '57
 Angela M. Story '06
 Lisa Story
 Edward Stotts '88
 Randall W. Stripp '79
 Nancy E. Stroud
 Herman A. Stubblefield '85
 Matthew A. Stufft '06
 Teresa A. Stumpf '79
 Kathryn J. Stuvaints '01
 John T. Sucha '74
 Theodore C. Sudiak '80 M'95
 Jeff '94 & Karen Suhayda
 Adam P. Sullivan '03 M'05
 Diane M. Sullivan '85
 Jane Sullivan
 Heather L. Summers '98
 David J. Sunseri '80
 Eugene Susi '90
 James S. Susko '84
 Elizabeth A. Sutton
 Mary Lou & Thomas Svienty
 Carla S. Swank '03
 Eleanor Swartz
 Gregory P. Swatek '02
 Kyle V. Sweitzer M'98
 Elizabeth Swinderman M'00
 Nathaniel R. Switzer '05
 Mary L. Sydor '01
 Luchia R. Sye '85
 Jody Sykes
 Joseph A. Szabat '87

David C. Szkoda M'05
 Linda M. Szramowski '78
 Joann E. Tabinowski '80
 Paul E. Taddeo '81
 Cindy L. Talaski '86
 Stephen F. Tambolas '85
 Erin K. Tarasi '89
 Kathleen Tarka '71
 Regina G. Tarquinio '77
 Jeanette M. Tarr '90
 Ellen E. Taylor '96
 Fred & Judy Taylor
 Nancy S. Taylor '66
 Randall J. Taylor '98
 William Taylor '77
 Gary M. Teckman '76
 Gerard F. Teckmeyer '78
 Stephen C. Tedrick '85
 Kelly D. Teets '06
 Donna J. Tenney '92
 Matthew G. Terchick '70
 Lori A. Terensky '00
 Irene K. Testa '83 M'89
 Catherine J. Thomas '71
 Edward A. Thomas M'95
 Hal S. '93 & Debra A. '93 Thomas
 Lewis C. Thomas '76
 Mary Ann Thomas '50
 Harry C. Thompson '06
 Renea A. Thompson '01
 Ashley R. Thomson '06
 Gerald A. Thornton '79
 Susan M. Thrappas '84
 Michael J. Throckmorton '00
 Timothy P. Timko '85
 Kellie L. Tinnion '05
 David C. '85 & Jo Marie Tissue
 Kathleen M. Tkachik '68
 Rose A. Todd
 Robert J. Tokar '73
 Cheryl J. Tokay '94 M'99
 Domenic Tolomeo '89
 Erin Tomczak
 Brian D. Tome '89
 Diana M. Tomko '64
 Michael R. Toney '03 M'06
 Gregory P. Toomey '84
 Nancy T. Topich '93 M'95
 Stephanie Topjian '06
 Veronica B. Toran '86
 Carmen J. '63 & Adele '63 Torockio
 James A. Tortella '85
 Mary L. Tracy '53
 John B. Trainor '93
 F. Raymond Trance M'88
 Charles R. Trau M'94

Kimberly G. Traupman '04
 Jacqueline A. Travisano '90
 Michael S. Tripp '70
 Linda M. Trocano '91 M'98
 Lucille N. Trohaugh '89
 Rita K. Trudel '01
 Paul Trunzo '88
 John Tucci
 Barbara J. Tully '86
 Theresa E. Tunison '75
 Lea B. Tunstalle '95
 Dolores H. Turak '61
 Kelly A. Turner '06
 Leslie A. Turner '03
 John S. Tuschak '71
 Kevin J. Tusick '99 M'05
 Bethany L. Tustin '06
 Robert J. Twining '84
 James G. Uhler '77
 Gail A. M'00 & Frank J. Ulager
 James S. Underhill M'00
 Heather R. Urbansky '93
 Laszlo J. Urmenyhazi M'85
 Sandra K. Ussia M'93
 Janine R. Vail '84
 Kristen M. Valerio '04
 Karen Valiante
 Frank Vallelunga M'94
 Ruth G. Vallor '62
 Marlene A. Van Sickle '87
 Shannon M. Vance '92
 Gregory D. Vanucci '71
 Charles S. Varga '71
 Elvira M. Vas '70
 Jodi L. Vasalani '92
 Anna Marie Vasconi '79
 Marlo D. Vaughn '95
 John O. Veltri '92
 Raymond G. Veltri '48
 Dale H. '81 & Elaine A. '96 Venables
 Jude R. Venesky '92
 Perry M. Venturini '86
 Mark S. Veon '83
 William '82 & Lynn Marie '78 Vescio
 Martha J. Vesonder '94
 Maureen Vetter '86
 Ronald J. Victor '87
 Sarah E. Vijlee M'03
 Richard A. Viscomi '69
 Vito D. Vitali '73
 Anthony Vitullo '66
 James E. Vlastic M'84
 Suzanne F. Vogel M'04
 Chris R. Voageley '52
 Adam Vogini M'06
 Paul D. Vojtek '84 M'96

Carl W. Volkwein '61
 Rose M. Volpe '80
 Jessica M. Von Hofen '06
 Dana J. Voss '98
 James M. Wagner '87
 Jennifer B. Wagner '06
 Autumn D. Walker '06
 John D. Walker '78
 Kathleen A. Wall '76
 Eric R. Wallis '98
 Michele A. Walsh '90
 Brian D. Walters
 Lori Wank
 Willie J. Ward '82
 Kevin P. Warner '77
 Kelly Y. Washington '01
 Kenneth M. Wasserman M'83
 William A. Watkins '78
 Kerri L. Watson '06
 Linda S. '84 & Michael Watson
 Sharon A. Watts '78
 Jill A. Waugh '03
 James Wayne
 Amy S. Weaver '90
 Robert E. Weaver '85
 James P. Webb M'97
 Patricia A. Webb '94
 Lynn M. Weber '91
 Cathy E. Webreck '69
 Richard T. Weigel '66
 Susan M. Weigold '81
 Denise M. Weimer '77
 Betty J. Weiss '65
 Kirk A. Weiss '95 M'97
 Bernetta D. Welch '86
 Diana L. Weller '69
 Diane A. Wells '83
 Christie L. Welsh '05
 Denise L. Welsh '06
 Susan J. Welsh M'85
 Janet Wentzel '85
 George R. Wertheimer '82
 Ronald J. Werthman M'80
 John V. Wesling '91
 Philip L. Wesner
 Michelle A. Wesolowski '90
 Joel F. West '04
 Westcott & Mapes, Inc.
 David E. Westerman '57
 Michael K. Westover '80
 Keith S. Weyman M'83
 Holly L. Whalen '06
 Ronald A. Whartenby '89
 Dorothy Wheeler '80
 Paul F. Wheeler '90 M'94
 John R. Whitaker '75

Christopher L. White M'99
 Daniel P. White '75
 Daniele White '06
 Harriet E. White '66
 Jason W. White '99
 Rhonda A. White '76
 Joseph M. Whiteko '71
 Marion F. Whiteman '60
 Kelly A. Whitsel '84
 Paul E. Wickerham '51
 Dorothy & Wilbur Wigginton
 Bonnie Sheridan Wikert '80
 Margaret M. Wilden '82
 Rebecca J. Wiley '97 M'04
 Maryann Wilhelm '81
 Murray E. Wilkow
 Amy S. Williams '03
 Chett T. Williams M'05
 Elissa A. Williams '06
 Jeffrey H. Williams '93
 Joni K. Williams '77
 Julia Williams '67
 Martha B. Williams '75
 Deborah M. Williamson '79
 James R. Williamson '71
 Karen M. Willis '74
 Maisie N. Wills '51
 Erma P. Wilson '60
 John M. '88 & Rita '77 Wilson
 Margaret E. Wilson '44
 Nancy J. Wilson '88
 Thomas Windram M'86
 Michelle J. Windsheimer '92
 Jeffrey J. Wink '00
 Loretta A. Winkle '82
 Denise E. Winter '01
 Rita M. Winter '67
 Mary E. Winters '93
 Erica D. Wiser M'04
 Clinton J. Wisniewski '95
 Patrick M. Wisnom '98
 Keith A. Wiwel '97
 Lawrence A. Wojtaszek '57
 David M. Wolak M'90
 Lisa R. Wolf '82
 Robert J. Wolf '86
 Vincent G. '89 & Denise L. '90 Wolf
 Lavern E. Wolfe '57
 Mark D. Wolfe '84
 John Wolfgang '77
 Thomas O. Wolfgang '67
 Edward R. Wolford '75
 Robert M. Wolkiewicz '72
 David F. & Barbara A. '96 M'00 Wood
 Douglas A. Wood '84
 Corinn J. Woods '05

Paul R. Wooten '98
 Richard M. Wooten '84
 Kathy L. Woytovich '05
 David L. Wozniak M'87
 Doris A. Wright '80
 James Wright '91
 Tammy L. Wright '86 M'92
 William J. Wright '95
 David A. Wytiaz '81 M'87
 Theodora L. Xidas '77
 Xiaoqian Xu-Stys '02 M'05
 John K. Yaklich '71
 Ming Y. Yan '82
 Angelina S. Yanez '82
 Lori Yanosich M'85
 Loretta S. Yanowich '56
 Judith A. Yasenovsky '79
 David F. Yasko '60
 Kathleen A. Yearm M'85
 Ralph Yelenic '88
 Robert P. Yelenovsky '72
 Jami D. Yeskovich '06
 Peter J. Yezbak '85
 Paula Yobp M'01
 Beverly S. Young '67
 Thomas E. Young '91
 Deborah E. Yucha '74
 Russell H. Yurk M'94
 Robert F. Yuska, Jr. '01
 Dolores Zabrecky '80
 John N. Zagorski '05
 Thomas P. '79 & Lisa '78 Zaken
 Tracy Zamborsky Fassinger '95
 Gerald T. Zamborsky '77
 Jaime L. Zaperach '03 M'06
 Leo P. Zappa M'00
 Richard A. Zarone M'99
 Matthew D. Zatchey '05
 Dennis F. Zatlin '98
 Caryn L. Zaya '83
 Raymond A. Zbikowski '70
 Brad Zediker M'06
 Kimberley A. Zeek '06
 Mary Lou Zeh M'06
 Vernon W. Zehms '85
 Tammy J. Zelenko '96 M'01
 Vincent S. Zeli '71
 Lisa Zeller '82
 Robert L. Zemcik '05
 Jay & Sherry Ziegler
 Seth A. Ziegler '99
 Carrie E. Zikeli '04
 Nicole Zilka
 Diane Zinkham '65
 Theodore J. Zobb '96
 Sharon A. Zola-Fedorek '90
 Michele R. Zollner M'98

Darlene P. Zupal '95
 Adam W. Zunic '06
 Mary Ann Zupon '66
 Donna J. Zuzek '70
 Barbara M. Zvoch '61
 Lori A. Zwigart '97

**SCHOLARSHIP FUNDS
 AND ENDOWMENTS**

Accounting Scholarship
 Alpern Rosenthal Endowed Scholarship
 American Marketing Association
 Endowed Scholarship
 William E. Amos Jr., D.D.S.
 Endowed Scholarship
 Zohar Asher Endowed Scholarship
 Colin and Alison Bailey Endowed
 Scholarship for Medical Students
 BankPittsburgh Endowed Scholarship
 in Honor of Jess Mellor
 Dr. John R. Basset Memorial
 Endowed Scholarship
 Bayer Minority Student
 Endowed Scholarship
 Beckwith Family Foundation
 Endowed Scholarship
 George M. Beidler Endowed Scholarship
 B. Kenneth Simon Professorship for the
 Center for Business Innovation
 Paul E. Block Endowed Scholarship
 Board of Trustees Endowed Scholarship
 Buchanan Ingersoll PC
 Endowed Scholarship
 Frank H. Burdine Endowed Scholarship
 Burdine Family Endowed Scholarship
 Coca-Cola Enterprises Scholarship
 Colonial Athletic Club
 Endowed Scholarship
 William J. Copeland
 Endowed Scholarship
 Deloitte & Touche USA LLP
 Endowed Scholarship
 Delta Nu Alpha Transportation Fraternity
 Endowed Scholarship
 David E. Dick Endowed Scholarship
 Doctor of Science in Information Systems
 and Communications Endowment
 John M. Duffy Endowed Scholarship
 Early-Years Endowed Scholarship
 Eat'n Park Hospitality Group Endowed
 Scholarship in Memory of John Vichie
 Eberly Family Endowed Scholarship
 Edna Ferry Endowed Scholarship
 Education and Social Sciences
 Endowed Scholarship
 Frank J. Erevelles Memorial Endowed
 Engineering Scholarship
 Robert T. Erwin Intramural Scholarship
 Fairbanks-Horix Foundation Endowed
 Scholarship for Engineering Students
 R. Eric Fonte Memorial Scholarship

Thomas V. Gaydos Performing Arts
 Endowed Scholarship
 Carrol George & Barbara Davidson
 Nursing Scholarship
 Martin D. Gillis Memorial
 Endowed Scholarship
 John and Luz Graham
 Endowed Scholarship
 Richard J. & Marjorie L. Harshman
 Endowed Scholarship for Business
 Health Sciences Endowed Scholarship
 William Randolph Hearst
 Endowed Scholarship
 Dr. William H. Heckel Memorial
 Endowed Scholarship
 Highmark Blue Cross Blue Shield
 Endowed Scholarship in Memory of
 Eugene Barone
 Hilb Rogal & Hobbs Endowed Scholarship
 Susan K. Hofacre Endowed Scholarship
 Charles and Nancy Homan Endowed
 Scholarship for Engineering
 International Honors Scholarship
 Jacobs-Alasya Business
 Achievement Reward
 J. Bruce Johnston Endowed Scholarship
 Johnston Silko Family
 Endowed Scholarship
 Henry and Maxine Katip Memorial
 Endowed Scholarship
 Klett Rooney Lieber & Schorling
 Endowed Scholarship
 Daniel and Lori Long
 Endowed Scholarship
 Marshall Ruscetti Foundation
 Endowed Scholarship
 Paul H. Masoner Scholarship
 Massey Endowed Scholarship
 Massey Endowment for the Center
 for Business
 Brianne Morgan Memorial Endowed
 Scholarship for Softball
 Mathematics Endowed Scholarship
 Michael Baker Corporation
 Endowed Scholarship
 Michael Baker Corporation Engineering
 Endowed Scholarship
 Phyllis Morrison Scholarship
 Gerd & Helen Mueller Endowed
 Scholarship for Medical Students
 Dr. Edward A. Nicholson Faculty
 Research Fund
 Edward and Agnes Nicholson
 Endowed Scholarship
 C.W. Olsen Endowed Scholarship
 Paul and Chandra Olson
 Endowed Scholarship
 Omurtag Engineering
 Scholarship Endowment
 One-Day-A-Week Endowed Scholarship
 Oticon Scholarship

Vernon and Ellen Petterson
 Memorial Scholarship
 PGT Trucking Inc. Endowed Scholarship
 PGT Trucking Inc. Endowed Scholarship
 for Student Athletes
 PGT Trucking Inc. One Million Mile
 Accident Free Driver
 Endowed Scholarship
 Norbert Pietrzak Endowed Scholarship
 Pittsburgh Logistics Systems Professor of
 Logistics Engineering Endowment
 PNC Endowment
 PricewaterhouseCoopers LLP
 Endowed Scholarship
 Gordon C. Ramsey & Kenneth E. Caine, Jr.
 Endowed Scholarship
 Dr. William F. & Dr. Diana Repak Scholarship
 Richard & Sandra Ritchie
 Endowed Scholarship
 RMU Endowed Book Fund
 Robert Morris University Alumni
 Association Endowed Scholarship
 Alvin and Ann Rogal Endowed Scholarship
 Patricia R. Rooney Endowed Scholarship
 Rotary Club of Moon Township
 Endowed Scholarship
 Roy F. Johns, Jr. Family Foundation
 Endowed Scholarship
 Denis P. Rudd Endowed Scholarship for
 Hospitality and Tourism
 Rudolph Family Endowed Scholarship
 Anita M. Ryan Memorial
 Endowed Scholarship
 Alice H. and Hoover Rydberg
 Endowed Scholarship
 Theresa L. Scheetz Endowed Scholarship
 Schneider Downs & Co., Inc.
 Endowed Scholarship
 School of Business Endowed Scholarship
 School of Communications and Information
 Systems Endowed Scholarship
 Schwab-Harrison Endowed Scholarship
 for Engineering
 SECORO Foundation/Sewickley Savings
 Bank Scholarship
 Jon and Sandy Shank Endowed Scholarship
 Gregory and Janet Spencer Endowed
 Scholarship for Medical Students
 Sport Management Endowed Scholarship
 Sport Management Endowed Scholarship
 for Sport Management Student Activities
 Stenger Scholarship
 Robert V. Stovash Endowed Scholarship
 David P. Synowka Endowed Scholarship
 for Sport Management
 Melvin D. Teetz Endowed Scholarship
 20-Year Club of Robert Morris University
 Endowed Scholarship
 United States Steel Foundation
 Endowed Scholarship

Ernest G. Unrath, Jr. Endowed
Book Scholarship
David A. Vandever Memorial Scholarship
Visiting Professorship Endowment
Samuel Walls Endowed Scholarship
Wolves Club of Aliquippa
Endowed Scholarship
Wolves Club of Coraopolis
Endowed Scholarship
Women of RMU Endowed Scholarship
Sidney and Ellen B. Zonn Endowed
Scholarship for Communications Students

MATCHING GIFT COMPANIES

*With appreciation to the following
companies and foundations for
their support.*

Alcoa Foundation
Allstate Insurance Company
Altria Group, Inc.
AT & T
Bechtel Bettis, Inc.
Bon Ton Stores Foundation
Burlington Northern Santa Fe Foundation
Coca-Cola Enterprises
Computer Associates International, Inc.
Deloitte & Touche USA LLP
Development Dimensions International
Eaton Corporation
Emerson Electric Company
Erie Insurance Group
Fannie Mae Foundation
Fifth Third Bank
FirstEnergy Foundation
Guardian Life Insurance Co.
H.J. Heinz Company Foundation
Highmark Blue Cross Blue Shield
Illinois Tool Works
Marsh USA Inc.
May Department Stores Company
Mellon Financial Corporation
MetLife Foundation
Morgan Stanley Dean Witter
National City Bank of PA
Nationwide Mutual Insurance Company
Occidental Petroleum Corporation
PNC Foundation
PPG Industries Foundation
PricewaterhouseCoopers LLP
Principal Financial Group Foundation, Inc.
Procter & Gamble Fund
Progressive Insurance Foundation
Roche Corporation
Siemens Westinghouse Power Corporation
State Farm Insurance Companies

United Parcel Service of America, Inc.
United States Steel Foundation Inc.
Wells Fargo Bank, N.A.

VOLUNTEERS

*With appreciation to the following
individuals who volunteered their time
in support of the University.*

Brian Abbey
Mark Acerni
Titi Adewale M'00
Ruth Alcorn
Scott Alexander
Melissa Allen
Dean Aloise
Alix Alton M'05
Richard E. Archer '83
Mary Frances Archey
Claudia Armani M'04
Thomas Arnold '92 M'97
Tracie M. Swesky Arnold '92 M'97
George Babish M'85
Susie Baker '98
Chris Bannon
Vivek Bapat
Michael C. Barbarita '72
Desmond Bartlett
Andy Barton
Dolores Bassett
William T. Battle
Gregory Beaver
Rick Bell
Frances M. Benko '86
Dave Border
Samuel Boyer
Jeffrey S. Broadhurst
Rick Brow
John Brown '75
Kristin Brown '02
Laurie Pethick Brugger '72
Timothy L. Brugger '73
John Buchta
Kyle Burgess
Ellen Langas Campbell '79
William Campbell '82 M'89
Catherine A. Caponi '77 M'81
Dan Cardone
Nicole Carter
John Cater
Renee Cavalovitch '01
Fern Cavetano
Kenan Cetin
Dacia Charlesworth, Ph.D.
Karen Chesko
Charles Chislaghi

Connie Cibrone
Jill Clary-Rowe '00 M'04
Gary R. Claus '74
Nancy Cobb
Bob Coblentz
Al Condeluci
Robert M. Connolly '77
Noelle Conover
Lauren Cooper '06
Charles L. Cost
Chris Cox
Matthew Craig
Daria Crawley, Ph.D.
Virginia Dailey
Ryan Daniels
Teresa Deaner '06
Adriane DeCaria '06
John R. Denny '85
Robert Derda
Bob Detillo
Joel Diamond
Sam DiCicco
David E. Dick '70
Scott Dietz '99
Don DiGirolamo
Emanuel DiNatale '77 M'89
Mona Dine
Ann DiTullio
Katie Dobbs
Michael Doherty '78
Len Donaldson
Tom Donati
Justin Driscoll
Margaret Dunn
Mark Exler '88
Joseph E. Falletta '92
Dr. Neal Fanelli
Roberta Ferguson
Buffy Filippell
B. Scott Finnell
Amy Fisher '00
Ann Flynn
Jay Flynn '78 M'83
Stephen Foreman
Tim Forster
Richard Fox
Larry Franzi M'88 D'03
Ronald W. Frisch '71
Diana L. Froats '82
Welling W. Fruehauf '71 M'01
Donald P. Fusilli Jr.
Patrick A. Gallagher
Ruth Rider Garfinkel '78
Jeffrey Garner
Caesar A. Garofoli
Paul D. Gedeon '87

James S. Gehlke '01
Lynn George
Gus P. Georgiadis
Theresa Giammarco
Pam Gibson
Michael Gildersleeve
Melva Gooden-Ledbetter
Janet Grady
Victor Gregovits '86
Gary Groom
Linda Guest
Jeffrey Guiler
John Hadgkiss
Jamie Halloran
David G. Hammer '83
James Hargis
Edward B. Harmon, Esq.
Robert E. Harper
Richard J. Harshman '78
Elaine Hatfield
Rachel Hauser
Cain Hayes
Oliver Hayes
Christina Heasley Treadwell '91
Nicole Herrmann
Cathy Hester '88 M'90
Irene Hoover
Daniel Horgan '02
Lisa Hortert '00
Holly Houston
Sally Huber-Lewis '99
Davie Huddleston
Jeff Hull
Mark Hull
Thomas A. Hunley '84
Drew A. Hurt '93
Elizabeth Husk
Carol Ifft
John Inman M'96 D'02
Timothy Ishman '86
Ola Jackson '87
TaWanda L. Jackson '02
Derya Jacobs
D. Michael Jamison M'95
David Jarrett
Scott Jeffries
Robert D. Jones
Linda S. Judson
Dr. Andrew Julius
Richard Kane
Dr. Linda Kavanaugh
Gerri Kay
Scott Kerr
R. Craig Kirsch
Stephen W. Klemash '82
Nora Kohnfelder

HONOR ROLL OF DONORS 2005 | 2006

Angela Kokanos '06
Lorraine Komorek
Josh Korotky
Beverly Kossum '91
Carolyn Kremear
Jill M. Conner Krieger '89
Barbara Kruze '65
Denny Kumpfmiller
Jim Lachima
John Lally
David J. Lancia '79 M'86
Brian R. Lang M'01
Deborah Lange
Ashley Laughlin '03 M'04
Jenea Laymon '99 M'03
Raymond W. LeBoeuf
Helen D. Lemmon
Andrew Link
Mars Lippa
William Logsdon
Daniel B. Long '82
Dr. R. Gerard Longo Jr.
Holly Lorenz
Gary Luhovey
Irv Luzer
John Lyncheski
Edward Macko
Carol S. MacPhail M'88
Monica Major
David J. Malone
Ed Manfredi
Chris Manna
Alex Marcran
Terri L. Marts M'85 D'02
Jeffrey Mascara
Joan Massella
Samuel J. Mastovich '96 M'98
Gus P. Mathews Jr. '78
Heather L. Mattern '01
Sheila McCollum
Craig McConnell
Merrit McDaniel
Elaine McDermott '98 M'01
Richard McDowell
Barbara A. McNees
Lanel Menezes M'04
Fran Merritt
Robert Meyers
Ann Michalski
Scott Miller '05
Richard Mills
Colleen D. Mitchell '95
Norman F. Mitry '74
Thomas Mole
Frank A. Molinero '72
Steve Monteverzie

Lisa Treonze Monzo '94 M'98
James Moore
Nancy Mramor
Gerd D. Mueller
J. Daniel Murphy
Melissa Musico
Susan Mussmann
David Neurohr
Carol Neyland
Edward Nicholson
Beth Niedringhaus
Joseph W. Nocito '70
Leonard Oddo
Patrick O'Shea
Kayla Otto '04
Peggy Outon
Anna Mae Paladina
Gary Panko
George M. Panno '95
Carleen Monahan Papa '93
Dana Pawlikowsky
Dewitt Peart '81
Benjamin Pegg '06
Suzi Pegg
Robert Perego
Heather R. Persi '04
Heather Mattern Pessy '01
Michael Pisula
Ronald Points '64
Kevin Popovic
Kevin Popovich
Martin Prekop
Kim Jones Prevost
Terry Pronko
Mary Ann Provenza
Robert Radermacher '80
Rachel Ragozzino
Tom Ralston
William T. Ramos
LeeAnn Ranieri
Dr. Mary Ravita
Rita Raymond
Shirl Regan
Kathy Rheam
Elizabeth R. Della Penna Rizor '90
Jacqueline K. Rizzo '95
Dick Roberts
Valerie McDonald Roberts
Robert W. Rogers
Bille Rondinelli
Patricia R. Rooney
Alex Ropelewski
Dena Rose-Buzila
Evan Rosenberg
Jessica Rosso '07
James A. Rudolph

Kevin Russell
Thomas J. Ryan '75 M'87
Tarra Rzepecki '99
Jim Salerno
Eugene A. Salvatore
Michael Samek '00
Tim Samolis '97 M'90
Debra Samuel
Janet Sardon
Bill Sarniak
Carl Satira
Kevin Saundry '94
Jill Schenck
Lauren Schmidt
Janet Kania Schneider '72
Robert G. Schriener
Gus Schroeder
Jack Shea
Mark Sherwin
Shobhan M. Sheth '86
Chris Shields '04
Jill Shipley
Bill Shore
Paula Shriver '88
Michele Govora Sites
Tom Skelton '89
Thomas C. Skena
Karl Skutski
David Sladack M'93
Howard Slaughter D'06
Dr. Glenn F. Smartschan
Greg Smith
Patrice Smith M'04
Tom Smith
W. Keith Smith
Rande Somma '73
John Somsky
Chuck Sosko
Francine Spear '92, M'01
Gregory R. Spencer
Polyxena Speros
Robert W. Stasik '75
Michelle Steinmetz
Jan E. Espin Stork '81
Jennifer Stough
Rick Strunk
Bill Sutton
Joan Swanderski
David Synowka
Steven Tassarò
Melvin D. Teetz
Jessica Thompson '07
Cheryl J. Tokay '94/M'99
Sandra R. Tomlinson '78
Frank Torbert
Lindsay Bond Totten

Gregg Troian
Mike Tyler
Ali Unal
Hope Vaccaro '97
Sandy Vandevort
Allison Koscevic Vaupel '95
Dale H. Venables '81
Abbey Viljee
James A. Vitale '81
Dan Volitich
Bruce Volstad
Ashley Wagers
Tom Wagner
JW Wallace
Dr. Gloria Walton
Jill A. Waugh '03
Dan Wehrle
Dr. Erv Weischedel
Jane Werner
Larkin Werner
Susan Wesmiller
Stephanie Westfall '01 M'03
Dorothy Wheeler '80
Thomas K. Whitford
Myrna Wigley
Amy Williams '03
Desiree Williams '05
James Williams
Sharon K. Williams
Steve Willing
John M. Wilson '88
Rita Langas Wilson '77
Dr. Roslynne Wilson
John Wisniewski
Timothy C. Wolfson '88
Kristy Wright
Elbie Yaworsky
Michael P. Yurosko '83 M'01
Ron Zangaro
Raeanne Zebra '00 M'02
Judith Zedreck
Lauralee Zelesnak
Patrick Zubrow

ADVANCEMENT



A LETTER FROM THE ALUMNI ASSOCIATION PRESIDENT

What a year it has been for Robert Morris University and the Alumni Association! I'd like to thank each of you who supported our alma mater through your investments of time, talent or treasure. In this annual report issue, we

review the accomplishments of the past year and recognize those who helped to move our University forward, increasing the value of our degrees and enhancing the education of current students.

As I mentioned in the last issue, the Alumni Association has set its sights on engaging more alumni in the life of RMU and the association. In addition to various events offered by the association, there are many opportunities for you to engage with the University community. Those of you who follow Colonial sports can join the Colonial Athletic Club. If you were a member of MusicalLove or ever attended a Tom Gaydos production in the Barn, you can take in a Colonial Theatre show. To connect with current RMU students or alumni in your field, you can join the Career Contact and Alumni Network.

I encourage you to take advantage of the benefits and services available to RMU alumni, including discounts on auto and home insurance through Liberty Mutual, no-fee credit cards through MBNA, and health insurance products through American Insurance Administrators. Your participation in these programs supports the Alumni Scholarship Fund. Or, show pride in your alma mater by choosing an RMU check card at PNC Bank or by ordering an RMU license plate in Pennsylvania. At the University, you can utilize the library, take advantage of Career Center services or access your transcripts for free. You can also subscribe to myRMUnews to receive the most up-to-date information about alumni and university events via e-mail.

The future of the Alumni Association starts with you. If you have suggestions on how we can better serve you, or questions or comments about our programs or events, contact the Office of Institutional Advancement at rmualum@rmu.edu or 412-262-8481.

Finally, when you get a call from a student or a letter asking for your financial support of the University, think about how RMU has helped you, and return the favor for the students of today and tomorrow.

THOMAS A. HUNLEY '84



THE 2006 CLASS GIFT COMMITTEE (LEFT TO RIGHT): BENJAMIN PEGG '06, KEVIN BAZNER '06, KRYSTAL PARENTEAU '06, LEANNA HULTQUIST '06, ANGELA STORY MARINO '06, JERRELL PARKS '06 AND ANDREW STALTER '06. NOT PICTURED: TYLER GETHING '06, RYAN HEALY '06, STEVE SIMS '06, PAUL SPRADLEY '03 M'06, MONICA STANTON '06, CORRY VARGO '06 AND JILL WAUGH '03 M'06.

CLASS OF 2006 ENDOWS BOOK FUND

The Class of 2006 has left its legacy at Robert Morris University through the newly created RMU Endowed Book Fund, which will award \$500 each year to an undergraduate student to assist in the purchasing of their textbooks. **Krystal Parenteau '06** and **Andrew Stalter '06**, members of the Class Gift Committee, announced the establishment of the book fund at the University's 81st Commencement exercises on May 6.

The RMU Endowed Book Fund was created because the Class of 2006 wanted to give something back to its fellow students. With a goal of raising \$10,000, the Class Gift Committee invited parents, alumni, faculty and staff to join in this challenge. More than \$15,000 was raised, creating an endowment that will benefit students for generations to come. The first gift, awarded for the 2006-07 school year, went to sophomore Ashley Zych.

The Class Gift Committee established the fund with the hope that future classes will build upon this tradition and continue adding to the fund, so that more students will benefit each year. Online gifts can be made to the RMU Endowed Book Fund at www.rmu.edu/universityfund.



ADVANCEMENT

TRUSTEE ESTABLISHES ENDOWED MEDICAL SCHOLARSHIP

Robert Morris University recently received a \$100,000 gift from Trustee Gregory R. Spencer and his wife, Janet, to create an endowed scholarship to support medical students in RMU's planned School of Osteopathic Medicine. The gift was the first to the medical school, which, if approved, is expected to enroll its first class in Fall 2008.

The Gregory and Janet Spencer Endowed Scholarship for Medical Students will benefit students enrolled in RMU's School of Osteopathic Medicine, with preference given to African-American students who are interested in practicing in underserved communities.



"Robert Morris University is most appreciative of the support Mr. and Mrs. Spencer have offered future students in our School of Osteopathic Medicine," said Gregory G. Dell'Omo, Ph.D., president of RMU. "The Spencers' gift will help defray the educational costs for these students, thereby reducing their debt and allowing them to choose primary care medicine and underserved populations."

"Ultimately, we hope that this gift will make it possible for young African-American doctors to develop primary care practices and strategic collaborations that will focus on eliminating the disparities in access to quality health care in underserved communities," said Spencer. "My wife and I are also pleased to be able to support Robert Morris University in its goal to maintain a diverse and inclusive educational environment."

A member of RMU's Board of Trustees since 1995, Spencer is president and chief executive officer of Randall Enterprises LLC, a diversified real estate firm that includes commercial and residential properties in Florida and Western Pennsylvania. He chairs the boards of several community organizations, including the Hill House Association, NEED and the African American Chamber of Commerce of Western Pennsylvania, and he serves on the boards of The Pittsburgh Foundation, Propel Schools and the Bethel AME Church. He serves on the Executive Leadership Council and is a life member of the National Association for the Advancement of Colored People (NAACP).



MICHAEL BAKER CORP. ENDOWS ENGINEERING SCHOLARSHIP

Robert Morris University recently received a \$50,000 gift from the Michael Baker Corporation of Moon Township, Pa., to create an endowed scholarship to support engineering students in the School of Engineering, Mathematics and Science.

The Michael Baker Corporation Engineering Endowed Scholarship will benefit full-time undergraduate engineering majors at RMU, with priority granted to students with a grade point average of 3.0 or higher who demonstrate need.

"The Michael Baker Corporation has long been a supporter of the mission of our engineering program at Robert Morris University," said Winston Erevelles, Ph.D., dean of RMU's School of Engineering, Mathematics and Science. "We are most appreciative of this generous gift, which will help many young people achieve their dreams of becoming exceptional engineers."

RMU's undergraduate engineering offerings currently include the Bachelor of Science (B.S.) in Engineering (with tracks in software engineering and logistics engineering) and the B.S. in Manufacturing Engineering, both of which are accredited by the Accreditation Board of Engineering and Technology (ABET). Graduate degree offerings include a Master of Science (M.S.) in Engineering Management, as well as an innovative, executive-format Doctor of Philosophy (Ph.D.) in Engineering.

Michael Baker Corporation provides engineering operations and maintenance services for their clients' most complex challenges worldwide. The firm's primary areas include aviation, environmental, facilities, geospatial information technologies, linear utilities, transportation, water/wastewater, and oil and gas.

CLASS NOTES

70s

BENNY JOE LOBELLO '73 is the general manager of LoBello's Restaurant in Coraopolis, Pa. He resides in McKees Rocks, Pa.

CINDA K. BURNS ROBERTS '75 is an admissions counselor for the Lake Erie College of Osteopathic Medicine in Erie, Pa. She and her husband, **LARRY ROBERTS '76**, reside in Erie.



BONNIE KELLEY '79 is senior vice president

of office leasing for the Houston office of Trammell Crow Co., one of the largest diversified commercial real estate services companies in the world. She resides in Houston.

80s

STEVEN W. CUMMINGS '81, M'85 is the director of project accounting for CHZM Hill in Denver, Colo. He resides in Englewood, Colo.

KATHI JOBKAR '84, M'99, C.P.M., received the Education/Learning Person of the Year Award at the Institute for Supply Management's 91st Annual International Supply Management Conference and Educational Exhibit in May 2006. Jobkar is the manager of strategic sourcing for Allegheny Technologies Inc. in Pittsburgh. She resides in Pittsburgh.

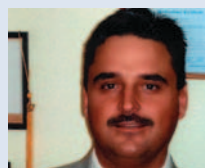
HOWARD SHAPIRO '87, an accountant by trade, is also a children's book author with two self-published books, *Hanukkah Counts Too!* and *Destructo Boy and Spillerella...We Are Who We Are!* He and his family reside in Moon Township, Pa.

GREG INCARDONA '89 is president-elect of the Pennsylvania Association of Mortgage Brokers. He runs Eagle Mortgage Associates Inc., an agency in Pleasant Hills, Pa. He and his wife, Beth, reside in Jefferson Hills, Pa.

90s

RANDY J. DUNN '90 is the director of stop loss underwriting for HM Insurance Group in Pittsburgh. He, his wife, Michelle, and their children, Rachel, 11, and Trevor, 4, reside in Bethel Park, Pa.

ERIC BRAHNEY '91, a Pittsburgh-based professional writer, has started a freelance copywriting business as sole proprietor. He resides in Pittsburgh.



EDWARD J. MARITZ JR. '92 M'96 graduated with a

Doctor of Education degree from Duquesne University on June 23, 2006. He is a 13-year member of the Sto-Rox School Board and was re-elected to a fourth term in 2005. Maritz is a secondary business education teacher in the Pine-Richland School District. He and his wife, Elizabeth, reside in McKees Rocks, Pa.



You Can Make a Difference

Gifts to the University Fund help Robert Morris University to provide student scholarships, enhance campus facilities and enrich the living-learning environment.

Make a difference today with a gift to the University Fund. Give online at www.rmu.edu/universityfund or call 412-262-8471.

GREG AMBROSE '96 is chief of system development, DTS, for the Office of the Secretary of Defense, Business Transformation Agency, in Arlington, Va. He resides in Arlington.

NORMAN C. LYON JR. '99 was promoted to director of donor services for Cryolife Inc., in Kennesaw, Ga. He oversees the entire U.S. efforts in tissue donation and transplantation. He and his wife, Monica, reside in Kennesaw.

00s

P. RANDY EAGAN '01 M'04 is a financial analyst with UPMC in Pittsburgh. He and his wife, **ANNA SUSTAK '04**, reside in Oakdale, Pa.

KATIE A. SCHMIDT '02 has been elected the youngest president in the history of the Moon Rotary Club. She is the director of sales for the Airport Area Hampton Inn in Moon Township, Pa. Schmidt resides in Baden, Pa.

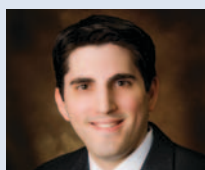
KATHLEEN E. NOVAK '03 graduated in May with a master's degree in counseling from Edinboro University of Pennsylvania. She resides in New Brighton, Pa.

NICOLE CONNELL '04 is a business assistant for UPMC in Pittsburgh. She resides in Bethel Park, Pa.

CLASS NOTES

JESSICA DEBO '04 is a network administrator with Millennium Pharmacy Systems in Wexford, Pa. She resides in New Brighton, Pa.

KELLY HAYS '04 was promoted to manager of the Eat'n Park Restaurant in Chippewa, Pa. She resides in Monaca, Pa.



SEAN KOCAN '04 was promoted to senior

accountant at Malin, Bergquist & Co., a Top 20 CPA firm in Pittsburgh. He resides in Cranberry Township, Pa.

JENNIFER SNYDER '04 is a program administrator at the Hagerstown Ice and Sports Complex in Hagerstown, Md. She resides in Martinsburg, W.Va.

HEATHER L. BLAKE '05 graduated in May with a master's degree in library science from Clarion University of Pennsylvania. She resides in Georgetown, Pa.

BRANDI HANDICK '05 joined the Northwood Realty Services office in Moon Township, Pa. She is a member of the Society for Human Resource Management and the Pennsylvania Association of Notaries. She resides in Carnegie, Pa.

JESSICA BELEY '06 is a junior copywriter for MatchPoint Marketing in Robinson Township, Pa. She resides in Fair Oaks, Pa.

EMILY DEWALD '06 is an advertising sales associate with the Pittsburgh Technology Council.

MEGHAN DOWNEY '06 is the "At Your Service" manager at the Pittsburgh Airport Marriott in Coraopolis, Pa. She resides in Pittsburgh.

KEN MOORE D'06 was promoted to senior vice president and chief information officer of Sinclair Community College in Dayton, Ohio. He resides in Dayton.

THOMAS C. SKENA M'06 is an advertising account supervisor for The Neiman Group in Harrisburg, Pa. He and his wife, Catherine Blair Skena, former director of alumni relations for RMU, reside in the Harrisburg area.

Engagements

AMANDA RICCIADELLO '04 is engaged to **JOSEPH SLEZAK '00**. Amanda is a sales and marketing coordinator for Pinnacle Systems Inc. in Moon Township, Pa. Joseph is an assistant marketing manager for Strive Enterprises in Southpointe, Pa. A January 2007 wedding is planned.

GRETCHEN DETER '03 is engaged to **CRAIG DAVIS '03**. Gretchen is a case manager for Cigna Group Insurance, and Craig is an IT consultant for Accenture. Both reside in the Pittsburgh area. An October 2006 wedding is planned at the Ann and Alvin Rogal Family Chapel on campus.

AMY M. KOTULA '04 is engaged to **CHAD T. REILLY '04**. Amy is a marketing coordinator for Charming Shoppes Inc., Fashion Bug Division. Chad is a project coordinator for the Bucks County Transportation Management Association. The couple resides in Bensalem, Pa. An April 2007 wedding is planned.

Marriages

HOPE WALKER '89 married Russell P. Milliken on Oct. 1, 2005. Both are employed by the U.S. Postal Service. The couple resides in Pittsburgh.

Kelly Collins married **MATT MILLET '99** on April 28, 2006. Matt is the director of corporate partnerships for the Sussex Skyhawks in Augusta, N.J. The couple resides in Branchville, N.J.

YVONNE MOFFATT '01 married Andrew Davis on July 23, 2005. **ANGEL LANTZ BELL '02** and **BECKY CARLSON '03** were bridesmaids. Yvonne is a clerk to a U.S. District Court judge in Colorado. The couple resides in Denver.

STACY A. SUSTAR '03 married **DOUGLAS M. RITCHART '01** on Nov. 25, 2005. Stacy is the assistant director of admissions at the Art Institute of Pittsburgh Online, and Doug is a senior account executive for Koeberle and Associates. The couple resides in Hopewell Township, Pa.

HEATHER FRITZ, who attended RMU from 2001-03, married **JOSEPH SEIDEL '03** on July 8, 2006. Heather is a registered



OCTOBER 14, 2006

You'll want to be part of Homecoming, so be sure to mark your calendar today!
Information was sent to alumni in September.

For more information, contact the Office of Institutional Advancement
at 412-262-8481 or rmualum@rmu.edu.

CLASS NOTES

nurse at Ohio Valley General Hospital, and Joseph is a videographer for Duquesne University. The couple resides in Pittsburgh.

STEPHANIE MCDONAGH '04 married Nathan Lindberg on May 27, 2006. The couple resides in Lakewood, N.Y.

Kristin R. Bearer married **BRIAN P. BROWN '05** on July 22, 2006. Brian is a teacher in the Penn Hills School District. The couple resides in Pittsburgh.

Births

Rachel Kate was born Jan. 5, 2006, to **DANA CAPUTO HARDEK '95** and her husband, **DUANE HARDEK '95**. She joins brother Ryan, 2. Dana is senior communications specialist for the Air Line Pilots Association, US Airways unit. The family resides in Center Township, Pa.

Grady Alan was born June 11, 2006, to **CARLEEN MONAHAN PAPA '93** and **DOUG PAPA M'05**. The family resides in Monaca, Pa.

Carlyn Samantha was born April 28, 2006, to **ALLISON RADI VAUPEL '96**, and her husband, Eric. Allison is a regional recruiter for IKON Office Solutions. The family resides in Pittsburgh.

Ethan James was born May 30, 2005, to **HEIDI LYNN MERTZ '97** and **BRIAN JAMES OPIELA '98**. Heidi and Ethan reside in Pittsburgh.

Jesse Daniel was born March 18, 2006, to **JOELENE HESTER**

HOLDERNY '99 and her husband, Dan. Joeline is senior financial accountant at WQED Multimedia in Pittsburgh. The family resides in Ross Township, Pa.

Adam was born June 27, 2006, to **MAJDA '02 M'04** and **DINO '01 CEHIC**. Majda is a web technology specialist for Enrollment Services at RMU. The family resides in Pittsburgh.

Colby David was born June 8, 2006, to **CHERYL E. MAURER M'05** and her husband, David. Cheryl is a laboratory scientist in RMU's Science Department. The family resides in Moon Township, Pa.

Deaths

REV. JOSEPH P. TRUNZO '52, of Canonsburg, Pa., died June 11, 2006. He was a retired United Methodist minister from the Western Pennsylvania Conference of the United Methodist church.

DIANA SZUBA TOMKO '64, of Swissvale, Pa., died June 6, 2006. She had been a 35-year employee of Eat'n Park Restaurants.

ROBERT S. PIERCE '75, of Columbus, Ohio, died May 22, 2006.

BETTY WEIDERT '91, of Burgettstown, Pa., died Feb. 20, 2006. She was a self-employed contractor with Ryan Homes.

THEODORE P. STURM, retired professor of social sciences at RMU, died July 19, 2006.

Dell'Omo Meets Alumni at University on the Road Events

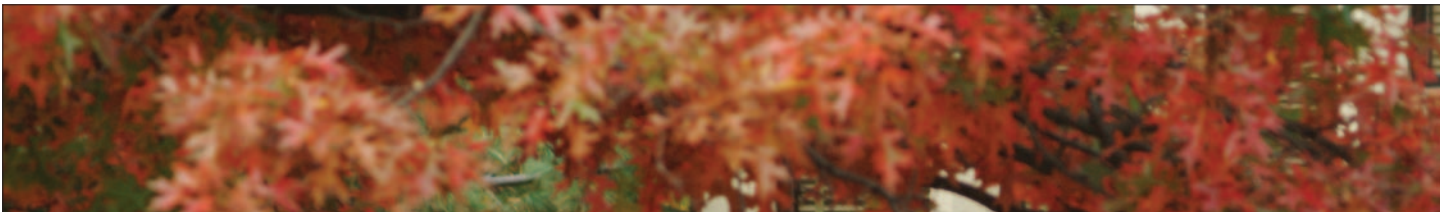
RMU President Gregory G. Dell'Omo, Ph.D. has made a commitment to visit with alumni in the region and beyond. During 2005-06, he met with alumni in Canonsburg, Cranberry, Greensburg, Monroeville, Moon Township, downtown Pittsburgh, Cleveland, Philadelphia, Erie and Staten Island at several "University on the Road" receptions. Receptions for Fall 2006 were scheduled for Johnstown (Sept. 13) and Washington, D.C. (Nov. 14). For additional dates and details, visit www.rmu.edu and click on Alumni and Contributors.



Vic Gregovits '86, senior vice president for marketing at the Cleveland Indians, hosted a group of RMU alumni at Jacobs Field in Cleveland. The group included Hadie Bartholomew '98, Gloria Bedosky '00, Katey Brennan '01 M'03, Carl Crennel '98, RMU President Gregory G. Dell'Omo, Ph.D., Richard DiTommaso '85 M'89, Daniel Hungerman '79, Andrea Inman '00, Christopher Inman '05, Thomas Nau '88, Catherine Skena, former RMU director of alumni relations, and Patrice T. Smith M'04, RMU administrator for prospect research and corporate/foundation grants.



The RMU women's crew team, their parents and coaches, and Philadelphia area alumni met for a reception while the team was in Philadelphia for the annual Dad Vail Regatta. Attending the event were: crew team members, crew team parents, Steve and Chris Aldworth, Chris and Sandy Blum, Linda Franchi and Pam Geiwont, RMU President Gregory G. Dell'Omo, Head Crew Coach Liz Jones, Assistant Coach Emily Humes, Ellen Langas Campbell '79, Edward '88 and Cheryl Marra, Brian '91 and Elizabeth Dell Penna '90 Rizer, Pat '82 and Sandy Rose, and Catherine Skena, former RMU director of alumni relations.



Upcoming Events

> OCTOBER 06

1 Blue-White Men's Intra-Squad Ice Hockey Game, 4 p.m., RMU Island Sports Center

10 Speaking of Business Luncheon, featuring Ronald Points '64, hosted by the School of Business and the RMU Alumni Association, 11:30 a.m., The Duquesne Club

12-15 Colonial Theatre Production: *Brighton Beach Memoirs*, Massey Theater

14 HOMECOMING 2006

Alumni Flag Football Game, 9 a.m., Joe Walton Stadium

Alumni Achievement Awards Presentation, 12:45 p.m., Joe Walton Stadium

RMU Football vs. Central Connecticut State, 1 p.m., Joe Walton Stadium

18 RMU Career Expo, 12:30 p.m., Charles L. Sewall Center Arena

21 Athletic Hall of Fame Induction, Joe Walton Stadium

27 30-Year Anniversary Celebration, RMU Sport Management Program

28 Inaugural Susan K. Hofacre Memorial Fun Run

> NOVEMBER 06

2 Networking Reception, 5 p.m., Charles L. Sewall Center

8 Pittsburgh Speakers Series: James Lovell, 8 p.m., Heinz Hall

8-12 Colonial Theatre Production: *The Assassins*, Massey Theater

14 Washington, D.C., Area Alumni Reception, The Cosmos Club, Washington, D.C.

> DECEMBER 06

6 Pittsburgh Speakers Series: Colin Powell, 8 p.m., Heinz Hall

FOR MORE INFORMATION on these and other upcoming events, contact the Office of Institutional Advancement at **412-262-8481** or rmualum@rmu.edu.

ALUMNI NEWS

NAME _____ YEAR OF GRADUATION _____

ADDRESS _____

CITY/STATE/ZIP _____

HOME PHONE _____ WORK PHONE _____

E-MAIL ADDRESS _____

PROFESSION/POSITION _____

EMPLOYER NAME _____

ADDRESS _____

CITY/STATE/ZIP _____

SPOUSE'S NAME _____

CHILDREN'S NAMES AND AGES _____

NEWS ITEM _____

MAIL THIS COMPLETED FORM TO: Office of Institutional Advancement, Robert Morris University, 6001 University Boulevard, Moon Township, PA 15108-1189. Or, send your news via e-mail rmualum@rmu.edu or fax **412-262-8642**.



PITTSBURGH SPEAKERS SERIES

PRESENTED BY ROBERT MORRIS UNIVERSITY

2006-2007 Season!

Heralded as entertaining and thought provoking – returns to Heinz Hall for seven memorable evenings

Pittsburgh Speakers Series invites you to experience the ultimate in cultural entertainment – seven evenings of diverse opinions, profound insights and fascinating discussion on a broad scope of issues. Pulitzer Prize and Nobel Peace Prize winners, world leaders, statesmen and other celebrated personalities will enlighten, inspire and entertain our audiences. Join us and enjoy a season of heroes and legends. You'll be pleased that you did.

At Heinz Hall

Make plans now to attend these highly acclaimed evenings!



Sept. 27, 2006

NORA EPHRON

ACCLAIMED SCREENWRITER, PLAYWRIGHT AND DIRECTOR

Widely acclaimed and Academy Award nominated screenwriter, playwright and director, with credits such as *Sleepless in Seattle*; *Michael*; *You've Got Mail*; *When Harry Met Sally*; and *Silkwood*.



Nov. 8, 2006

JAMES LOVELL

ASTRONAUT AND COMMANDER OF APOLLO 13

Time Man of the Year & Presidential Medal of Freedom recipient, and genuine hero. As Cmdr. of the ill-fated Apollo 13 mission, he spoke the famous words, "Houston, we have a problem." His story was told in *Apollo 13* starring Tom Hanks as Lovell.



Dec. 6, 2006

COLIN POWELL

FORMER CHAIRMAN OF THE JOINT CHIEFS & SECRETARY OF STATE

After culminating his 35 year career in the U.S. Army as President Reagan's National Security Advisor and Chairman of the Joint Chiefs of Staff, this revered Four-Star General became our 65th Secretary of State.



Jan. 31, 2007

CHRISTIANE AMANPOUR

CNN'S CHIEF INTERNATIONAL CORRESPONDENT

Since joining CNN in '83, she has risen to chief international correspondent. She has covered every major story from Iran; Afghanistan; Iraq; Israel; Pakistan; Somalia to the Balkans... and interviewed most of the world's leaders in those countries.



Feb. 28, 2007

MICHAEL MEDVED

NATIONALLY SYNDICATED RADIO HOST & FILM CRITIC

His nationally syndicated radio talk-show reaches 2 million listeners daily. He was the 12 year co-host of PBS's *Sneak Preview*, and film critic for CNN and the New York Post and authored *Hollywood vs. America*.



Mar. 21, 2007

ROBERT F. KENNEDY, JR.

ENVIRONMENTAL ATTORNEY & ADVOCATE

A resolute defender of and advocate for the environment, he is "committed to having a positive impact on the quality of life for future American generations." He has prosecuted governments and corporations alike for polluting the environment.



Apr. 25, 2007

ARI FLEISCHER

FORMER WHITE HOUSE PRESS SECRETARY

As former White House Press Secretary, he was the primary spokesman for President Bush after serving on the Bush-Cheney campaign. His book *Taking Heat*, details his years in the White House, and reached #7 on the NY Times best-seller list.

Reserve your seats now for this and future seasons!

Call 412-392-4900 Today!

Order Now!



SPONSORED BY
greater pittsburgh chamber of commerce

2006-2007 SEASON
Performances: 8pm – 9:30pm

Sold by Series Subscription Only

Open Seating – \$275

Reserved Seating – \$375 & \$420

Prices are for tickets to all 7 lectures

ORDER BY PHONE: (412) 392-4900

ONLINE: www.pittsburghspeakersseries.org

At Heinz Hall



COMMENCEMENT WEEK 2006 – MASTERS CEREMONY, HONORS CEREMONY, DOCTORAL DINNER AND COMMENCEMENT DAY

ROBERT MORRIS UNIVERSITY
1921



6001 University Boulevard
Moon Township, PA 15108-1189
www.rmu.edu

Non-Profit Org.
U.S. Postage
PAID
Pittsburgh PA
Permit No. 280